



Rainy River Community College

College Profile

Compiled: March 2009

Prepared by: Office of Institutional Research
Douglas Olney, Director
1851 East Highway 169
Grand Rapids, MN 55744
218-322-2408
dolney@itascacc.edu

Rainy River Community College

College Profile

The Rainy River Community College Profile provides general statistical and descriptive information about the college which may be useful to those engaged in planning, assessment, preparing reports, writing grant proposals, or other endeavors within the college. The Profile is a reference tool that provides a picture of Rainy River Community College for fiscal year 2009 by using fall 2008 data, along with historical trend data. While not all available data has been gathered, the data represented here accurately depicts the major areas of the college.

Data may differ from other college and state reports. Such variances result from source of information used, the date on which the report was generated or the reporting period included in the data. Trends should be tracked using identical data sources over time.

Rainy River Community College's Mission and Vision

Mission

Rainy River Community College serves its communities by guiding learners to achieve their educational, career, personal, and civic goals.

Vision

Rainy River Community College will inspire learners and their communities to achieve their full potential.

Accreditation

Rainy River Community College has maintained accreditation by the Higher Learning Commission of the North Central Association of Colleges and Schools (www.ncahlc.org) since 1976.

**RAINY RIVER COMMUNITY COLLEGE
COLLEGE PROFILE
TABLE OF CONTENTS**

Enrollment Trends.....	1-3
Fiscal Year Headcounts (Table 1).....	1
FYE – Historic & Projected (Table 2)	1
Headcount and FTE - 10 th Day - Fall Terms (Table 3).....	2
Headcount and FTE - 30 th Day - Fall Terms (Table 4).....	2
Full-time/Part-time - 30 th Day - Fall Terms (Table 5)	2
Full-time/Part-time by Gender – 30 th Day – Fall Terms (Table 6)	2
Average Credit Load by Term (Table 7).....	3
Enrollment Trends (Chart 1)	3
 Student Demographic and Academic Profile	 4-13
Gender Distribution (Table 8).....	4
Age by Age Group (Table 9)	4
Gender by Age Group (Table 10).....	5
Traditional Age vs. Non-Traditional Student (Table 11).....	5
Average Age (Table 12).....	6
Ethnicity (Table 13).....	6
Canadian Students (Table 14)	7
Student Level (Table 15).....	7
New Students (Table 16)	8
New/Return Students by Full/Part-time Status (Table 17)	8
Resident Status (Table 18)	8
New Students by Admission Status (Table 19)	9
County of Residence (Table 20)	9
High School Attended of New Students (Table 21)	10
Student Intent (Table 22)	10
New Students Source High School (Map 1).....	11
New Students Source Zip Code Area (Map 2)	12
Financial Aid Comparison (Table 23).....	13
Students Receiving Financial Aid (Table 24).....	13
 Academic Progress and Degrees Earned.....	 14-22
Discipline Summary by FYE – 5 Year Comparison (Table 25)	14
Major Enrollment Summary – 5 Year Comparison (Table 26)	15
On-line Enrollment (Table 27).....	15
Program Enrollments (Table 28)	15
Degrees Awarded by Fiscal Year (Table 29).....	16
Fall to Following Fall Retention – New, Full Time Students (Chart 2).....	16
Retention and Success Rates for Fall 2004 (Table 30)	17
Retention and Success Rates for Fall 2005 (Table 31)	18
IPEDS Graduation & Transfer-out Rates (Table 32)	19
Graduate Follow-up Survey - FY 1998-2006 (Table 33).....	20
Continuing Education & Customized Training Enrollment (Table 34)	21
Technical Program Headcount (Table 35)	22

Faculty and Staff	23
Gender Distribution (Table 36).....	23
Age Distribution (Table 37)	23
Years of Service (Table 38)	23
Full-time/Part-time Status by Unit (Table 39)	23
College Financial Data	24-25
Statement of Net Assets – Unaudited (Table 40)	24
Statements of Revenues, Expenses and Changes in Net Assets - Unaudited (Table 41)	25
Regional Population and Employment.....	26-29
Population Estimates 2000-2007 (Table 42)	26
Projected 30 Year Population (Table 43)	27
Koochiching County Population Projections by Age Group (Chart 3)	27
High School Enrollment (Table 44)	28
2007-08 Enrollment for Area School Districts - K through 12 (Table 45)	28
Average Unemployment Rate (Table 46).....	29
 New Student Survey Summary – 2008 (Tables 1-4).....	 30
Graduate Survey Summary - 2007-08 (Tables 1-4).....	31-32

Enrollment Trends

Table 1
Fiscal Year Headcounts 1999 to 2008

	FY 1999	FY 2000	FY 2001	FY 2002	FY 2003	FY 2004	FY 2005	FY 2006	FY 2007	FY 2008
Summer I	137	92	111	141	97	77	56	76	89	77
Summer II	64	33								
Fall	684	659	617	534	418	383	421	410	400	440
Spring	604	731	643	591	472	410	385	423	362	376
FY Duplicated HC	1489	1515	1371	1266	987	870	862	909	851	893
FY Unduplicated HC	976	1086	962	847	633	548	532	584	518	531

Source: MnSCU ISRS Operational Data/ITS Management Reports/Enrollment/FYE by Campus

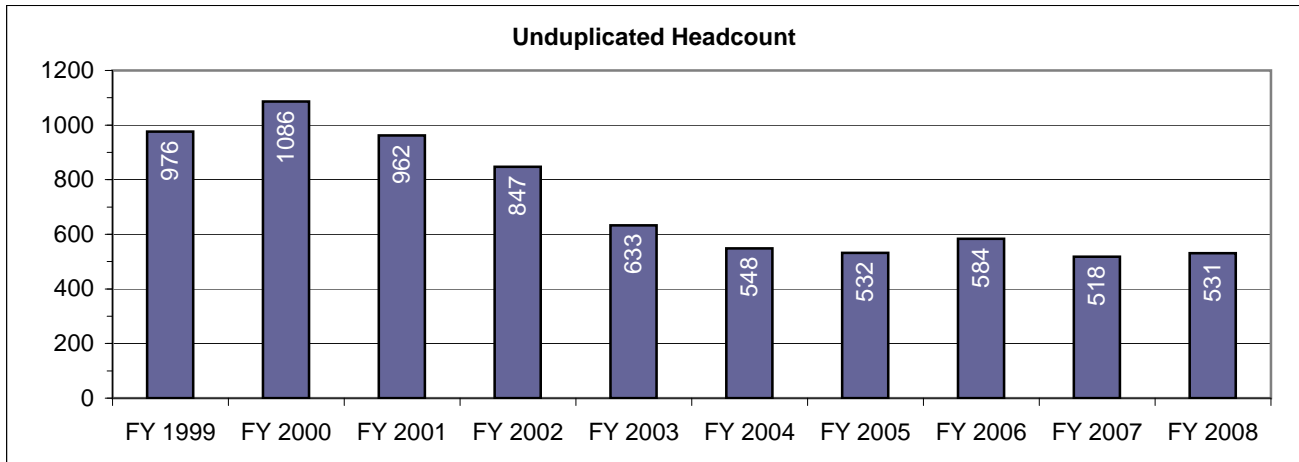


Table 2
FYE- Historic and Projected

	Actual FY2003	Actual FY2004	Actual FY2005	Actual FY2006	Actual FY2007	Actual FY2008	Projected FY2009	Projected FY2010	Projected FY2011	Projected FY2012	Projected FY2013
Totals	306	302	323	320	303	304	270	300	315	325	331

Source: MnSCU Finance Division, Oct. 2008

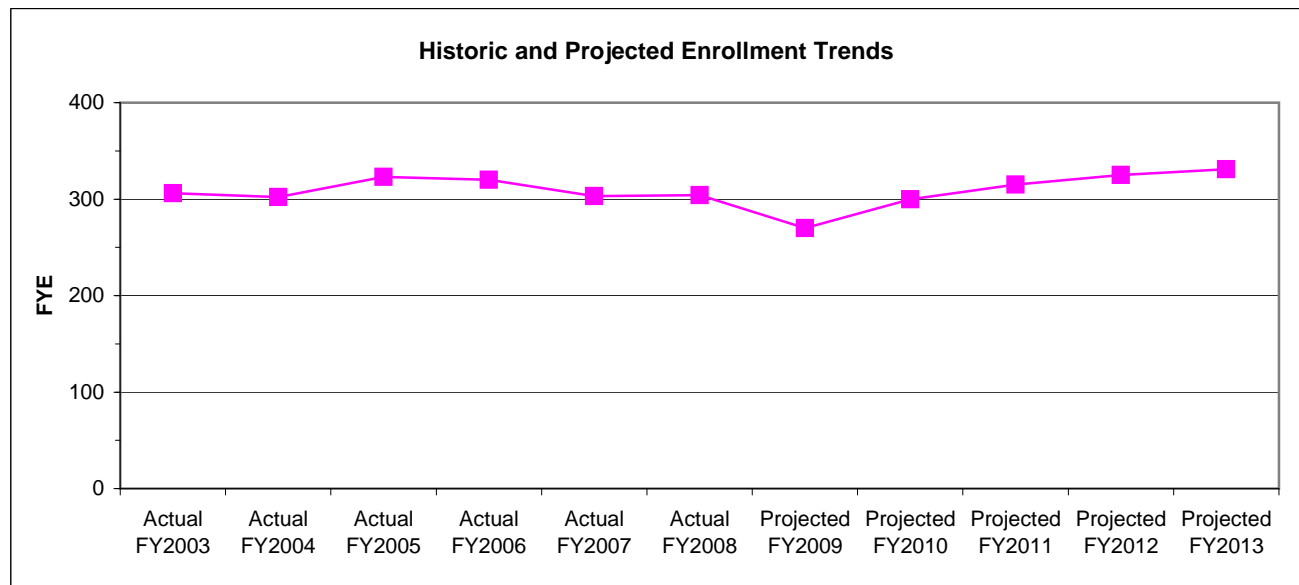


Table 3
Headcount and FTE - 10th Day - Fall Terms

	Fall 04	Fall 05	Fall 06	Fall 07	Fall 08
Head Count	421	417	399	421	343
FTE	349	344	328	327	264

Source: 10th Day Enrollment Tables/MnSCU ISRS Operational Data

Table 4
Headcount and FTE - 30th Day - Fall Terms

	Fall 04	Fall 05	Fall 06	Fall 07	Fall 08
Head Count	423	415	401	427	342
FTE	349	343	323	329	266

Source: 30th Day Enrollment Tables/MnSCU ISRS Operational Data

Table 5
Full-time/Part-time - 30th Day - Fall Terms

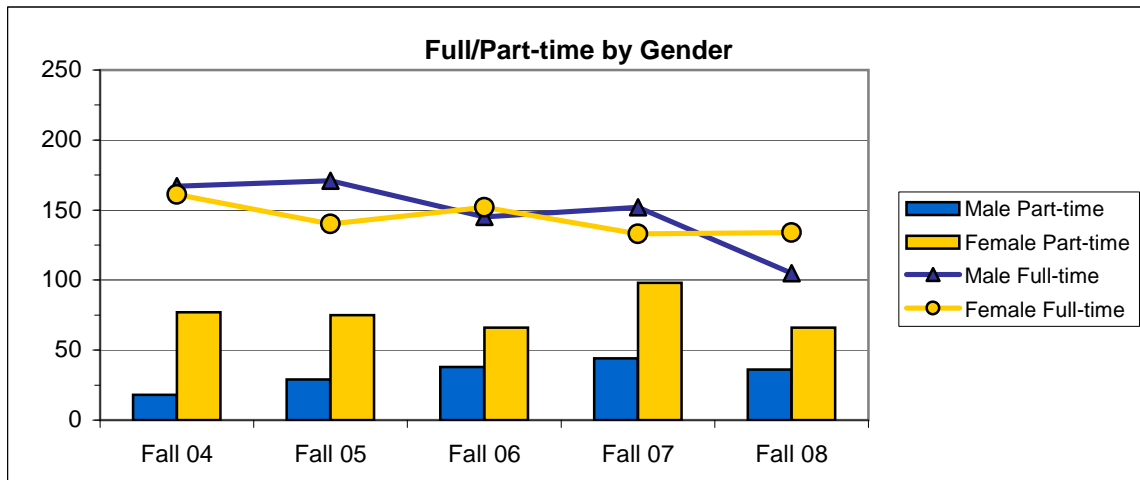
	Fall 04		Fall 05		Fall 06		Fall 07		Fall 08	
	Count	Percent	Count	Percent	Count	Percent	Count	Percent	Count	Percent
Part-time	120	28%	104	25%	104	26%	142	33%	102	30%
Full-time	303	72%	311	75%	297	74%	285	67%	240	70%
Total	423		415		401		427		342	

Source: 30th Day Enrollment Tables/MnSCU ISRS Operational Data

Table 6
Full-time/Part-time by Gender - 30th Day - Fall Terms

	Fall 04		Fall 05		Fall 06		Fall 07		Fall 08	
	Count	Percent	Count	Percent	Count	Percent	Count	Percent	Count	Percent
Male										
Part-time	18	4%	29	7%	38	9%	44	10%	36	11%
Full-time	167	39%	171	41%	145	36%	152	36%	105	31%
Total Male	185	44%	200	48%	183	46%	196	46%	141	41%
Female										
Part-time	77	18%	75	18%	66	16%	98	23%	66	19%
Full-time	161	38%	140	34%	152	38%	133	31%	134	39%
Total Female	238	56%	215	52%	218	54%	231	54%	200	59%
Total	423		415		401		427		341	

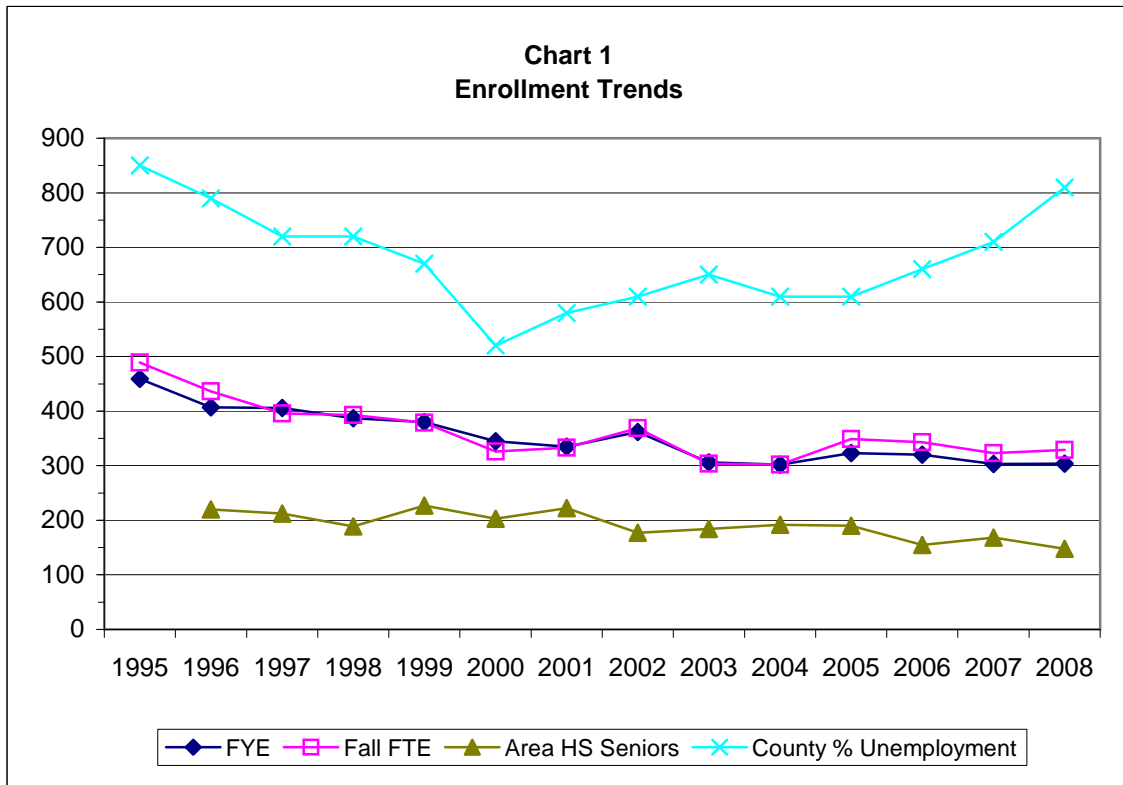
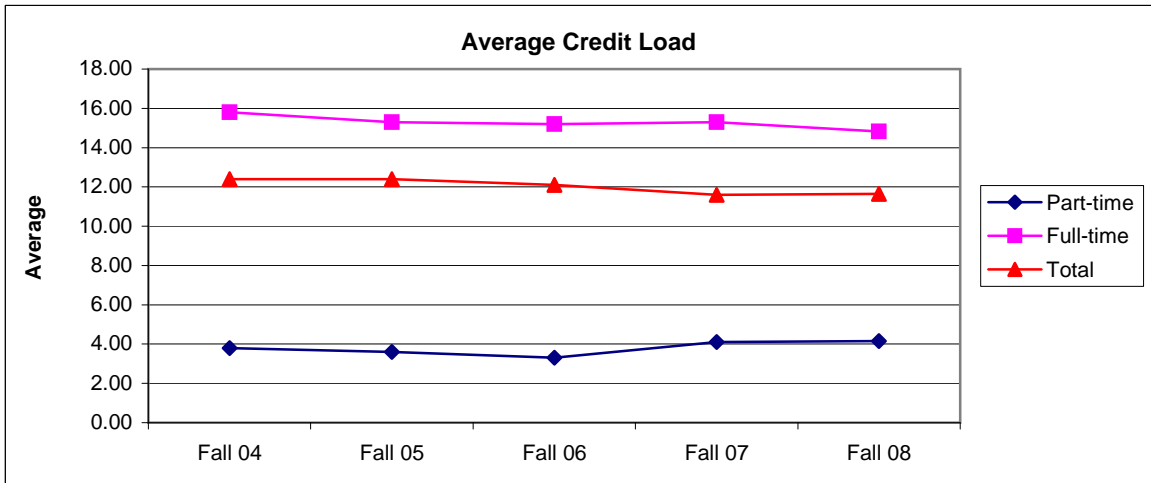
Source: 30th Day Enrollment Tables/MnSCU ISRS Operational Data



**Table 7
Average Credit Load**

	Fall 04 Mean	Fall 05 Mean	Fall 06 Mean	Fall 07 Mean	Fall 08 Mean
Part-time	3.80	3.60	3.30	4.10	4.16
Full-time	15.80	15.30	15.20	15.30	14.83
Total	12.40	12.40	12.10	11.60	11.65

Source: 30th Day Enrollment Tables/MnSCU ISRS Operational Data

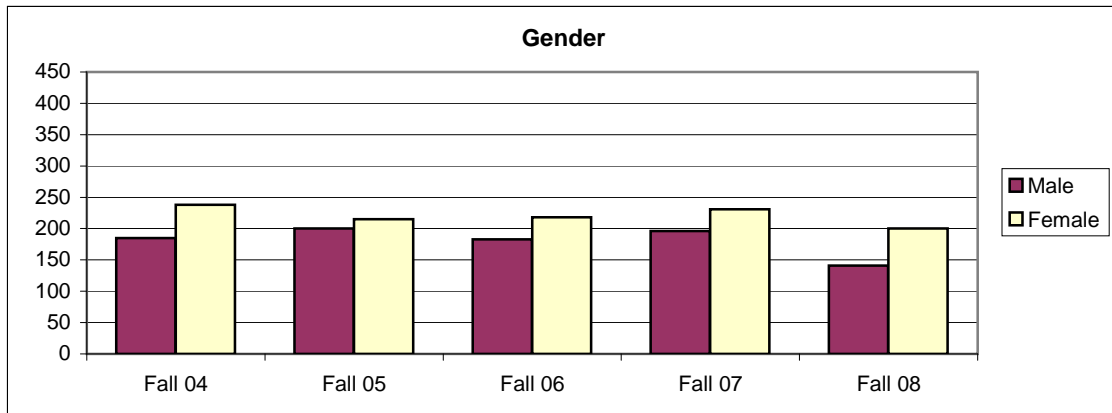


Student Demographic and Academic Profile

**Table 8
Gender Ratio**

	Fall 04		Fall 05		Fall 06		Fall 07		Fall 08	
	Count	Percent	Count	Percent	Count	Percent	Count	Percent	Count	Percent
Male	185	44%	200	48%	183	46%	196	46%	141	41%
Female	238	56%	215	52%	218	54%	231	54%	200	58%
Unknown									1	0%
Total	423		415		401		427		342	

Source: 30th Day Enrollment Tables/MnSCU ISRS Operational Data



**Table 9
Age by Age Group**

	Fall 04		Fall 05		Fall 06		Fall 07		Fall 08	
	Count	Percent	Count	Percent	Count	Percent	Count	Percent	Count	Percent
Under 18	45	11%	61	15%	59	15%	57	13%	55	16%
18-20	187	44%	181	44%	175	44%	156	37%	110	32%
21-24	47	11%	46	11%	41	10%	48	11%	33	10%
25-29	16	4%	21	5%	15	4%	34	8%	31	9%
30-39	34	8%	26	6%	34	8%	34	8%	39	11%
40 and older	83	20%	71	17%	71	18%	93	22%	70	20%
No response	11	3%	9	2%	6	1%	5	1%	4	1%
Total	423		415		401		427		342	

Source: 30th Day Enrollment Tables/MnSCU ISRS Operational Data

Table 10
Gender by Age Group

	Fall 04		Fall 05		Fall 06		Fall 07		Fall 08	
	Count	Percent	Count	Percent	Count	Percent	Count	Percent	Count	Percent
Female										
Under 18	27	11%	40	19%	36	17%	39	17%	32	16%
18-20	81	34%	66	31%	79	36%	60	26%	65	33%
21-24	19	8%	18	8%	16	7%	20	9%	12	6%
25-29	10	4%	13	6%	10	5%	20	9%	19	10%
30-39	22	9%	16	7%	22	10%	21	9%	24	12%
40 and older	70	29%	55	26%	53	24%	70	30%	47	24%
No response	9	4%	7	3%	2	1%	1	0%	1	1%
Total Female	238		215		218		231		200	
Male										
Under 18	18	10%	21	11%	23	13%	18	9%	23	16%
18-20	106	57%	115	58%	96	52%	96	49%	45	32%
21-24	28	15%	28	14%	25	14%	28	14%	20	14%
25-29	6	3%	8	4%	5	3%	14	7%	12	9%
30-39	12	6%	10	5%	12	7%	13	7%	15	11%
40 and older	13	7%	16	8%	18	10%	23	12%	23	16%
No response	2	1%	2	1%	4	2%	4	2%	3	2%
Total Male	185		200		183		196		141	
Total	423		415		401		427		341	

Source: 30th Day Enrollment Tables/MnSCU ISRS Operational Data

Table 11
Traditional Age (24 or less) vs. Non-Traditional Student

	Fall 04		Fall 05		Fall 06		Fall 07		Fall 08	
	Count	Percent	Count	Percent	Count	Percent	Count	Percent	Count	Percent
Traditional	287	68%	295	71%	280	70%	262	61%	198	58%
Non-traditional	133	31%	118	28%	120	30%	161	38%	140	41%
No response	3	1%	2	0%	1	0%	4	1%	4	1%
Total	423		415		401		427		342	

Source: 30th Day Enrollment Tables/MnSCU ISRS Operational Data

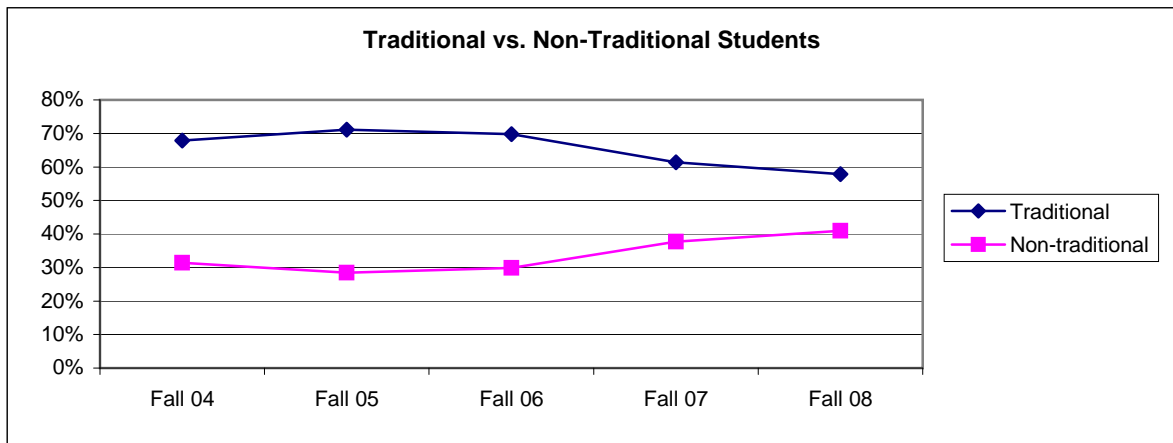


Table 12
Average Age

	All Students Mean	Full-time Mean	Part-time Mean
Fall 2004	27.90	21.10	45.50
Fall 2005	26.80	21.10	44.20
Fall 2006	27.47	21.12	45.80
Fall 2007	29.37	21.29	45.56
Fall 2008	30.23	21.28	51.26

Source: 30th Day Enrollment Tables/MnSCU ISRS Operational Data

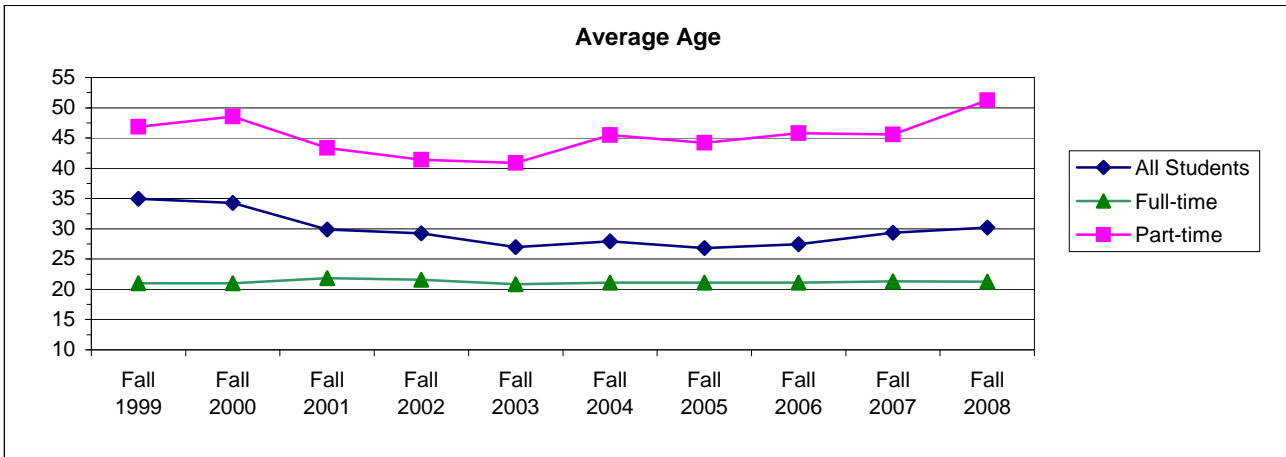
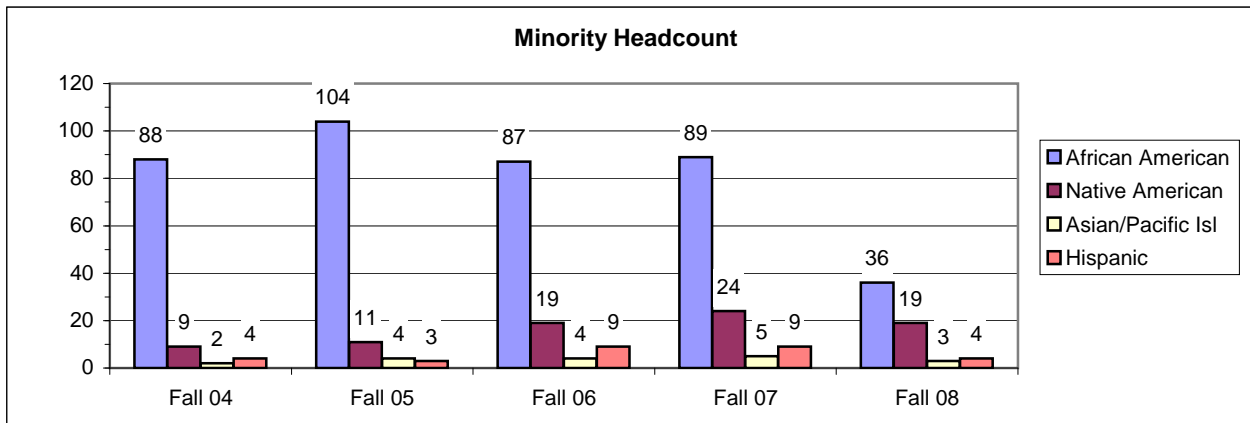


Table 13
Ethnicity

	Fall 04		Fall 05		Fall 06		Fall 07		Fall 08	
	Count	Percent	Count	Percent	Count	Percent	Count	Percent	Count	Percent
African Am.	88	21%	104	25%	87	22%	89	21%	36	11%
Native Am.	9	2%	11	3%	19	5%	24	6%	19	6%
Asian/Pacific Isl	2	0%	4	1%	4	1%	5	1%	3	1%
Hispanic	4	1%	3	1%	9	2%	9	2%	4	1%
White	316	75%	279	67%	273	68%	286	67%	264	77%
Unknown	4	1%	14	3%	9	2%	14	3%	16	5%
Total	423		415		401		427		342	

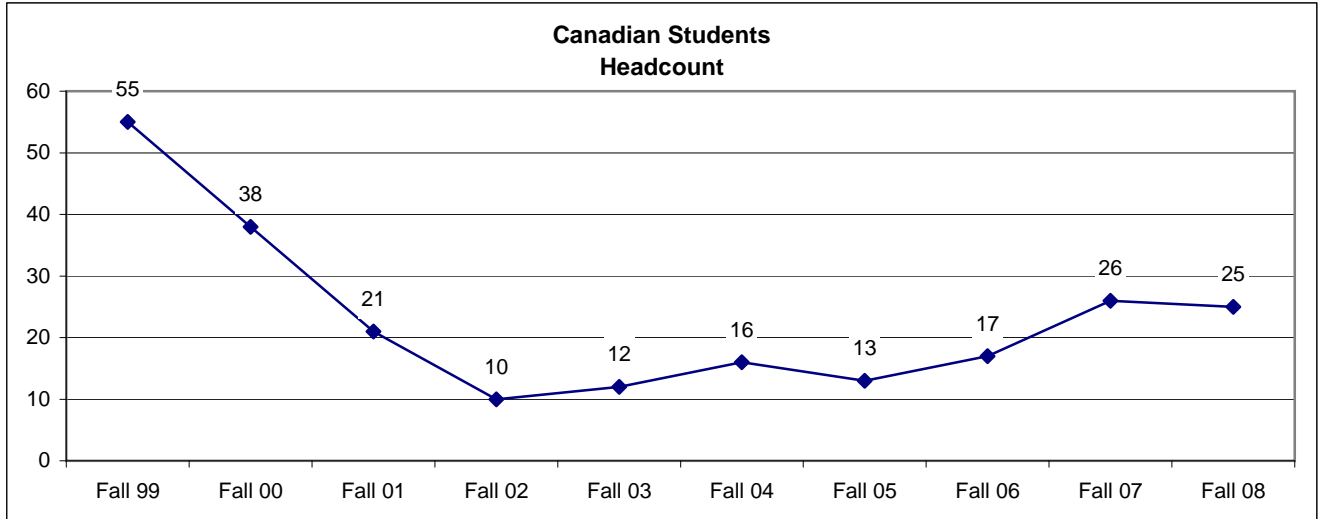
Source: 30th Day Enrollment Tables/MnSCU ISRS Operational Data



**Table 14
Canadian Students**

	Fall 04		Fall 05		Fall 06		Fall 07		Fall 08	
	Count	Percent	Count	Percent	Count	Percent	Count	Percent	Count	Percent
Canadian	16	4%	13	3%	17	4%	26	6%	25	7%

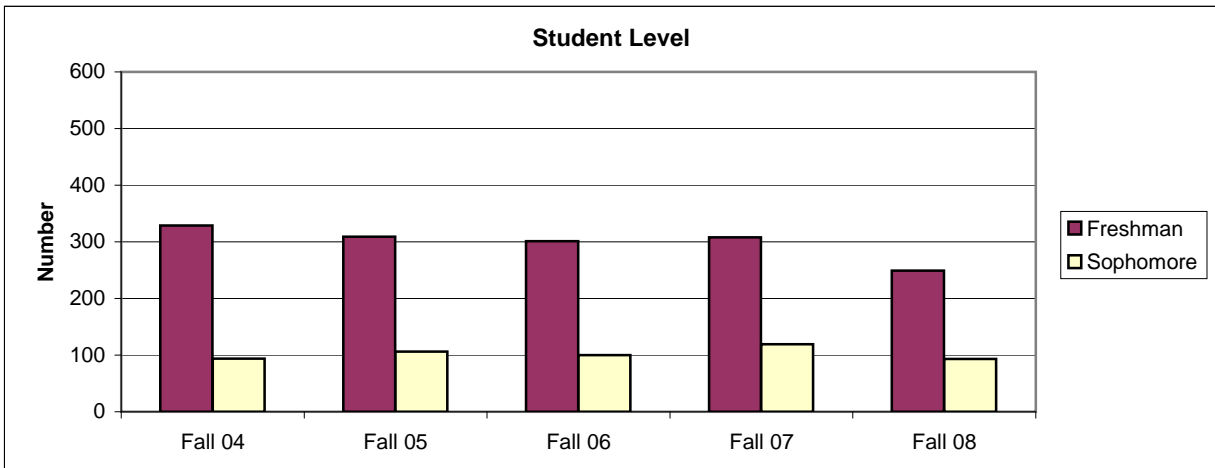
Source: RRCC Registrar's Office



**Table 15
Student Level**

	Fall 04		Fall 05		Fall 06		Fall 07		Fall 08	
	Count	Percent	Count	Percent	Count	Percent	Count	Percent	Count	Percent
Freshman	329	78%	309	74%	301	75%	308	72%	249	73%
Sophomore	94	22%	106	26%	100	25%	119	28%	93	27%
Total	423		415		401		427		342	

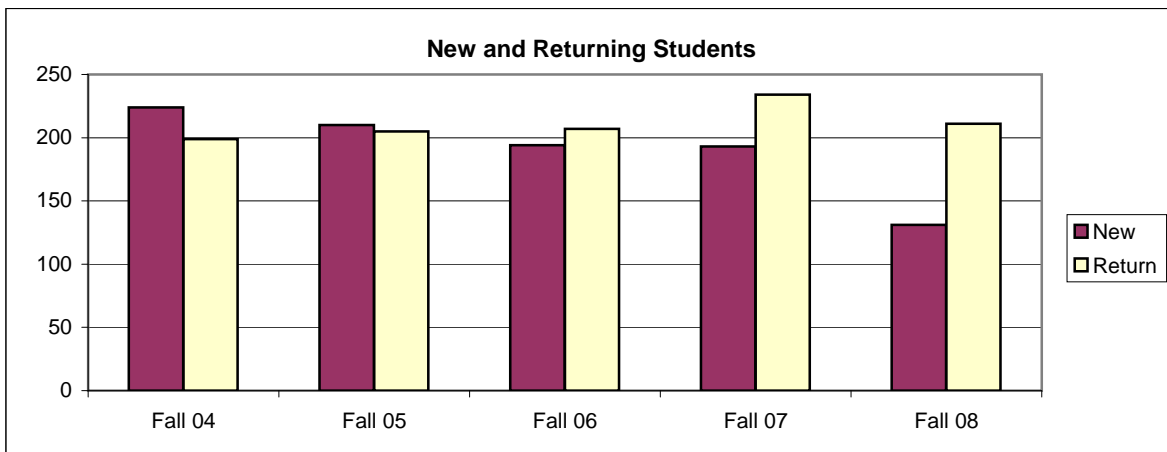
Source: 30th Day Enrollment Tables/MnSCU ISRS Operational Data



**Table 16
New Students**

	Fall 04		Fall 05		Fall 06		Fall 07		Fall 08	
	Count	Percent	Count	Percent	Count	Percent	Count	Percent	Count	Percent
New	224	53%	210	51%	194	48%	193	45%	131	38%
Return	199	47%	205	49%	207	52%	234	55%	211	62%
Total	423		415		401		427		342	

Source: 30th Day Enrollment Tables/MnSCU ISRS Operational Data
New Students in Summer or Fall



**Table 17
New/Return Students by Full/Part-time Status**

New	Fall 04		Fall 05		Fall 06		Fall 07		Fall 08	
	Count	Percent	Count	Percent	Count	Percent	Count	Percent	Count	Percent
Part-time	33	15%	28	13%	20	10%	36	19%	11	8%
Full-time	191	85%	182	87%	174	90%	157	81%	120	92%
Total	224		210		194		193		131	

Return	Fall 04		Fall 05		Fall 06		Fall 07		Fall 08	
	Count	Percent	Count	Percent	Count	Percent	Count	Percent	Count	Percent
Part-time	87	44%	76	37%	84	41%	106	45%	91	43%
Full-time	112	56%	129	63%	123	59%	128	55%	120	57%
Total	199		205		207		234		211	

Source: 30th Day Enrollment Tables/MnSCU ISRS Operational Data
New Students in Summer or Fall

**Table 18
Resident Status**

	Fall 04		Fall 05		Fall 06		Fall 07		Fall 08	
	Count	Percent	Count	Percent	Count	Percent	Count	Percent	Count	Percent
Resident	315	74%	291	70%	285	71%	302	71%	296	87%
Non-resident	108	26%	124	30%	116	29%	125	29%	46	13%
Total	423		415		401		427		342	

Source: Fall 30th Day Enrollment Tables/MnSCU ISRS Operational Data

Table 19
New* Students by Admission Status

	Fall 04		Fall 05		Fall 06		Fall 07		Fall 08	
	Count	Percent	Count	Percent	Count	Percent	Count	Percent	Count	Percent
Undergrad Regular	147	66%	104	50%	114	59%	120	62%	67	51%
Undergrad Transfer	40	18%	37	18%	28	14%	39	20%	25	19%
PSEO Regular	36	16%	46	22%	42	22%	24	12%	35	27%
Undergrad Unclassified	1	0%	23	11%	10	5%	10	5%	4	3%
Total	224		210		194		193		131	

Source: Fall 30th Day Enrollment Tables/MnSCU ISRS Operational Data

*New in the summer or fall.

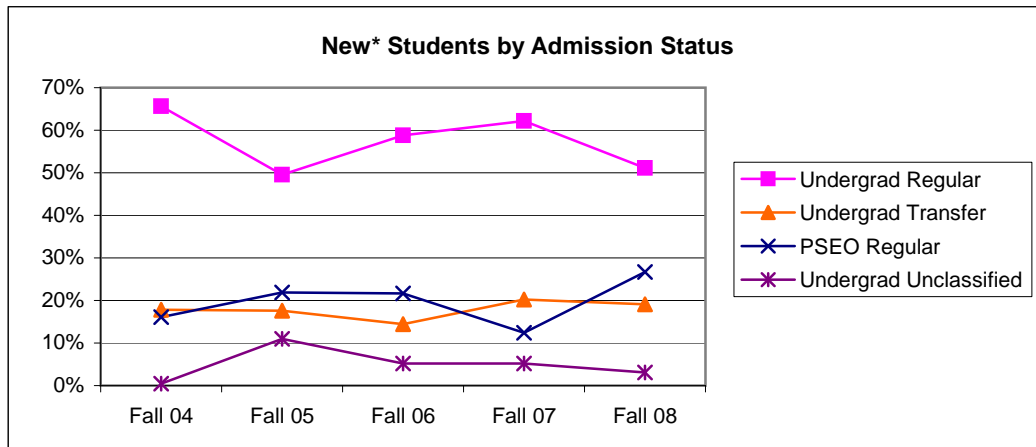


Table 20
County of Residence

	Fall 04		Fall 05		Fall 06		Fall 07		Fall 08	
	Count	Percent	Count	Percent	Count	Percent	Count	Percent	Count	Percent
Koochiching	219	51.8%	236	56.9%	244	60.8%	247	57.8%	232	67.8%
Lake of Woods	7	1.7%	1	0.2%	2	0.5%	10	2.3%	8	2.3%
Hennepin	6	1.4%	3	0.7%	1	0.2%	4	0.9%	6	1.8%
St Louis	1	0.2%	1	0.2%	2	0.5%	3	0.7%	3	0.9%
Cass					4	1.0%	4	0.9%	2	0.6%
Roseau	1	0.2%			2	0.5%	4	0.9%	2	0.6%
Anoka	3	0.7%	1	0.2%			1	0.2%	1	0.3%
Beltrami	1	0.2%			1	0.2%			1	0.3%
Itasca	1	0.2%					1	0.2%		
Carlton	1	0.2%	1	0.2%	2	0.5%				
Stearns	3	0.7%	4	1.0%	1	0.2%				
Ottertail	1	0.2%								
MN Other*	9	2.1%	7	1.7%	10	2.5%	12	2.8%	11	3.2%
Out of State	43	10.2%	54	13.0%	42	10.5%	69	16.2%		
Florida	52	12.3%	55	13.3%	49	12.2%	28	6.6%	1	0.3%
Unknown	18	4.3%	9	2.2%	16	4.0%	23	5.4%	75	21.9%
Unknown MN	57	13.5%	43	10.4%	25	6.2%	21	4.9%		
Total	423		415		401		427		342	

Source: 30th Day Enrollment/MnSCU ISRS Operational Data

*Fall 06 Other Includes 9 Other Counties

*Fall 04 Other Includes 9 Other Counties

*Fall 07 Other Includes 10 Other Counties

*Fall 05 Other Includes 7 Other Counties

Table 21
High School Attended of New Students

	Fall 04		Fall 05		Fall 06		Fall 07		Fall 08	
	Count	Percent	Count	Percent	Count	Percent	Count	Percent	Count	Percent
Falls High School	73	33%	71	34%	69	36%	63	33%	63	48%
Other	26	12%	24	11%	12	6%	12	6%	20	15%
Indus High School	6	3%	8	4%	8	4%	6	3%	7	5%
Little Fork-Big Falls High Sch	7	3%	4	2%	4	2%	6	3%	3	2%
Lake Of The Woods High School	3	1%	1	0%			2	1%	1	1%
Cass Lake-Bena High School	2	1%							1	
					3	2%	1	1%		0%
					2	1%	1	1%		0%
School	2	1%								
School	2	1%								
High School	2	1%								
School	2	1%								
Other-State	70	31%	72	34%	62	32%	70	36%	11	8%
Fort Frances					10	5%	9	5%	2	2%
Other-Internatio	4	2%	7	3%	6	3%	13	7%	12	9%
GED	7	3%	6	3%	5	3%	5	3%	7	5%
Home School			4	2%	6	3%	3	2%	3	2%
Unknown	18	8%	13	6%	7	4%	2	1%	1	1%
Total	224		210		194		193		131	

Source: 30th Day Enrollment Tables/MnSCU ISRS Operational Data

2004 "Other" includes 23 schools

2006 "Other" includes 12 schools

2008 "Other" includes 17 schools

2005 "Other" includes 22 schools

2007 "Other" includes 11 schools

New in the summer or fall.

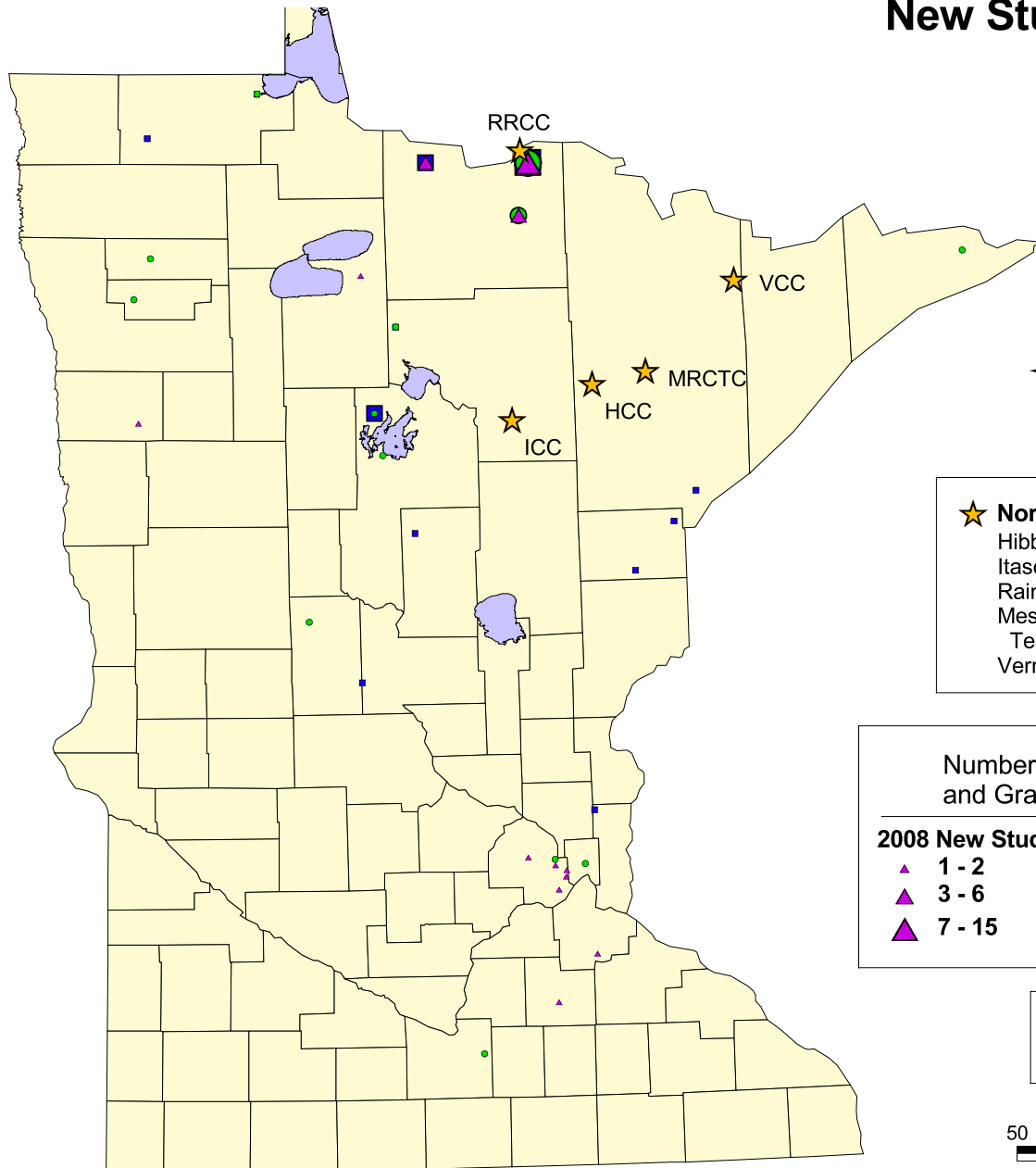
Table 22
Student Intent

	New Student Survey		Graduate Survey	
	2008		2008	
	Count	Percent	Count	Percent
Earn a Degree	68	73%	49	94%
Not Earn a Degree	9	10%	1	2%
Undecided	16	17%	2	4%
Total	93		52	

Sources: 2008 New Student Survey, 2008 Graduate Survey

New Students* by Source High School 2006 - 2008

*New students in the summer or fall .



- ★ **Northeast Higher Education District Campuses**
 Hibbing Community College (HCC)
 Itasca Community College (ICC)
 Rainy River Community College (RRCC)
 Mesabi Range Community & Technical College (MRCTC)
 Vermilion Community College (VCC)

Number of New Students from Source High School and Graduated from High School in the Same Year

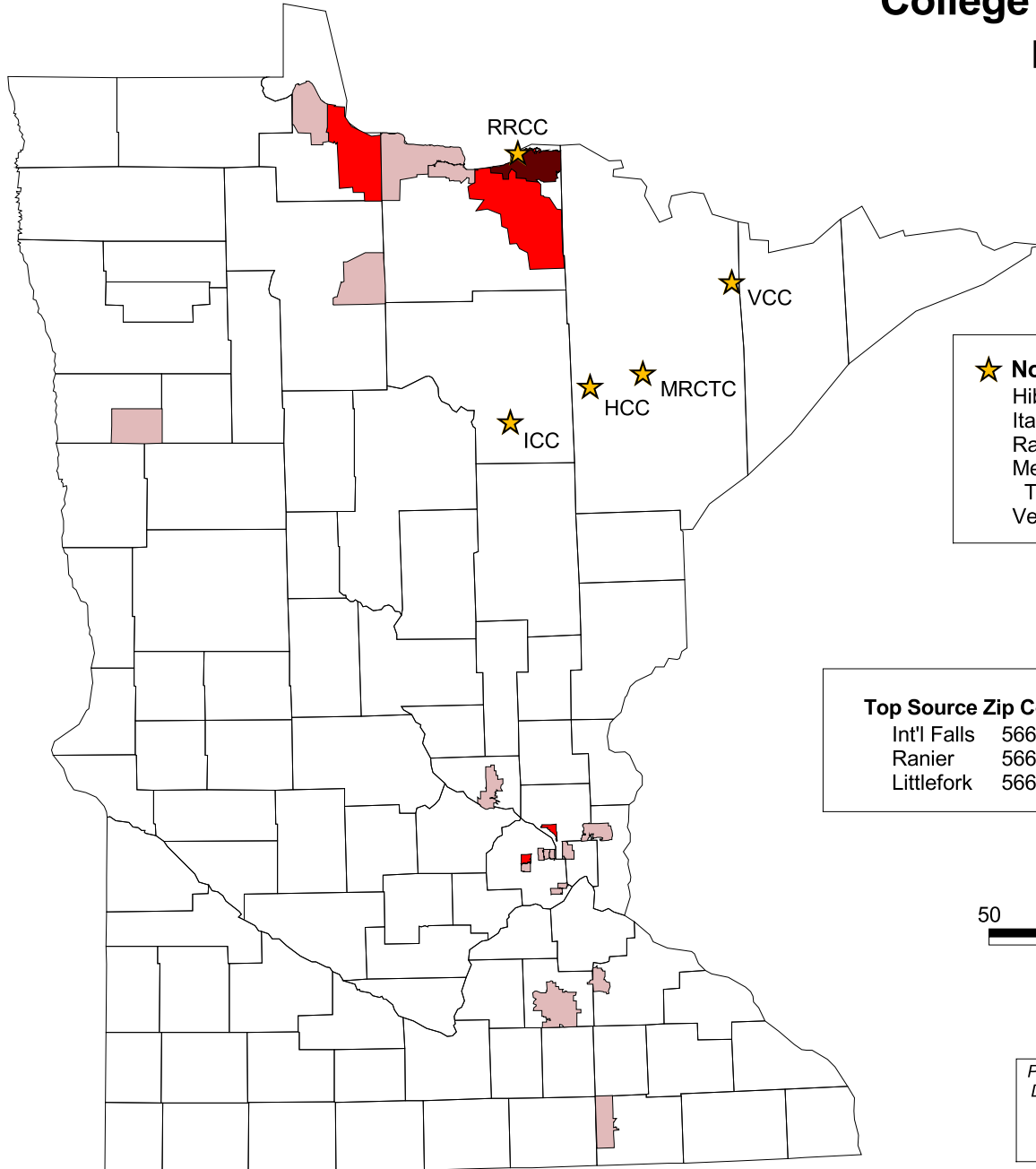
2008 New Students	2007 New Students	2006 New Students
▲ 1 - 2	● 1 - 2	■ 1 - 2
▲ 3 - 6	● 3 - 6	■ 3 - 6
▲ 7 - 15	● 7 - 21	■ 7 - 23

Prepared by: The Office of Institutional Research, Mar. 09
 Doug Olney, 218-322-2408 & Tracey Roy, 218-322-2409
 Source: MnSCU ISRS Operational Data - 30th day
 Not intended for legal purposes.



College Enrollment for New Students by Source Zip Code Area 2008

**New students in the summer or fall.
This map only reflects Minnesota zip codes.*



- ★ Northeast Higher Education District Campuses**
- Hibbing Community College (HCC)
 - Itasca Community College (ICC)
 - Rainy River Community College (RRCC)
 - Mesabi Range Community & Technical College (MRCTC)
 - Vermilion Community College (VCC)

Top Source Zip Code Areas

Int'l Falls	56649	81
Ranier	56668	4
Littlefork	56653	3

of Students from Zip Area

	1
	2 - 4
	5 - 81



*Prepared by: The Office of Institutional Research, Mar. 09
Doug Olney, 218-322-2408 & Tracey Roy, 218-322-2409
Source: MnSCU ISRS Operational Data - 30th day
ArcView GIS/ESRI (zip boundaries may vary)
Not intended for legal purposes.*

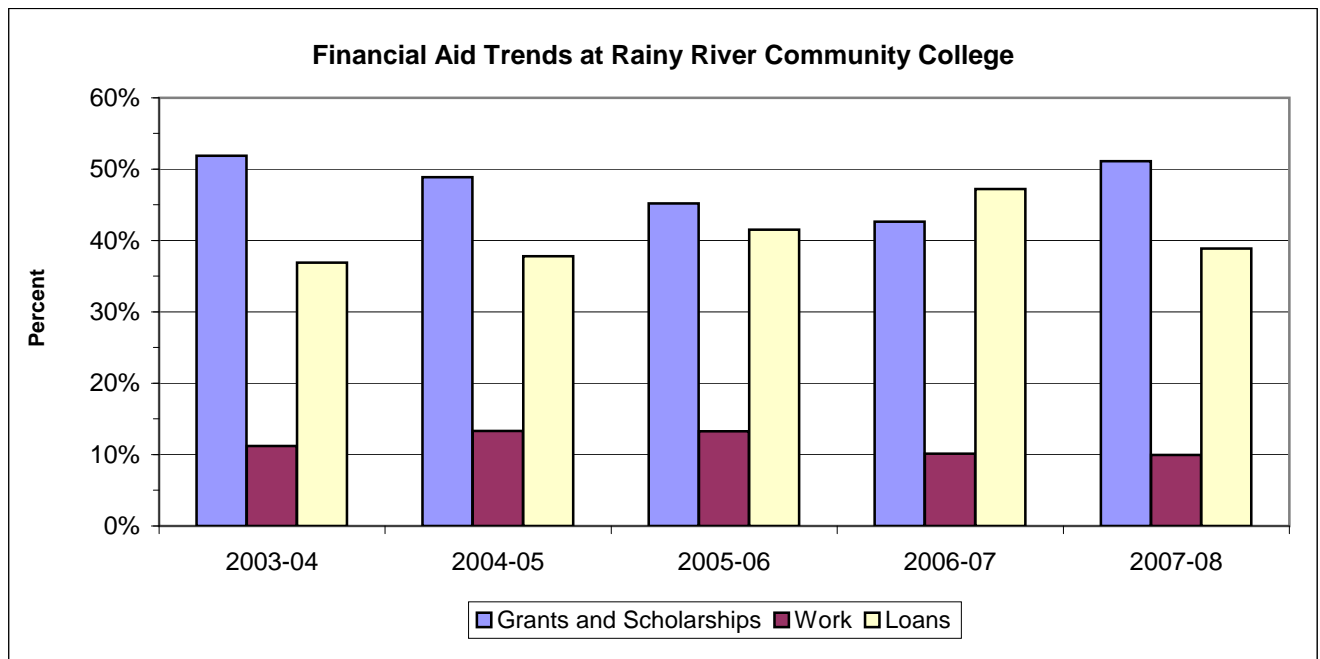
Table 23
Financial Aid Comparison

	Gift Aid	Loans	Work
Rainy River CC (FY08)	51%	39%	10%
Rainy River CC (FY07)	43%	47%	10%
MNSCU 2 yr (FY06)	42%	55%	3%
MNSCU 4 yr (FY06)	27%	70%	3%
University of MN (FY06)	41%	57%	2%
Private 4 yr (FY06)	54%	44%	2%
All MN Institutions (FY06)	42%	56%	2%

Source: College Financial Aid Data

Table 24
Students Receiving Financial Aid

	2003-04		2004-05		2005-06		2006-07		2007-08	
	Dollars	Percent	Dollars	Percent	Dollars	Percent	Dollars	Percent	Dollars	Percent
Grants and Scholarships	866,835	52%	899,030	49%	860,441	45%	727,937	43%	988,130	51%
Work	186,993	11%	245,169	13%	252,353	13%	173,018	10%	192,606	10%
Loans	616,887	37%	695,765	38%	789,999	42%	805,998	47%	751,508	39%
Total \$	1,670,715		1,839,964		1,902,793		1,706,953		1,932,244	
Recipients	353		358		351		278		332	



Academic Progress and Degrees Earned

Table 25
Discipline Summary by FYE - 5 Year Comparison

	2004	2005	2006	2007	2008	5 Yr Difference	5 Yr Difference %
Accounting	6.0	3.3	4.4	4.6	5.7	-0.2	-4%
Anishinaabe			1.6	2.0	3.2	3.2	
Art	13.5	13.3	15.2	17.0	14.1	0.6	4%
Aviation		0.5	0.4		0.2	0.2	
Biology	12.2	11.5	9.8	9.8	9.2	-3.0	-25%
Business	20.4	11.5	13.7	19.6	14.5	-5.9	-29%
Chemistry	4.5	1.3	0.4	2.8	2.8	-1.7	-37%
Communications					0.1	0.1	
Computer Science	7.9	9.7	8.3	7.2	7.6	-0.3	-4%
Economics	10.4	7.8	7.1	8.9	7.1	-3.3	-31%
Education (General)	0.8	0.2	0.5			-0.8	
Electronics	0.8		0.9		2.1	1.3	152%
English	42.9	42.4	48.4	41.9	39.2	-3.7	-9%
Engineering						0.0	
Film	2.4	2.5	2.5	2.5	2.5	0.1	4%
Elements of Geography	0.2					-0.2	
German	0.7					-0.7	
History	8.5	10.5	11.6	12.3	10.3	1.8	21%
Health	11.1	13.9	13.2	13.1	12.7	1.5	14%
Humanities	1.6	0.6		0.1		-1.6	
Indigenous Studies		6.9	6.6	5.8	5.9	5.9	
Industrial Technology					18.5	18.5	
Mathematics	42.1	43.4	37.8	38.8	36.6	-5.5	-13%
Assistant						0.0	
Mass Communications	0.1					-0.1	
Marketing	1.1	0.6	1.2	0.4		-1.1	
Management			2.3	1.2	1.3	1.3	
Music	1.2	1.3	0.5	0.8	0.4	-0.8	-64%
Natural Science	9.9	15.6	15.9	14.7	15.6	5.7	58%
Nursing	23.5	33.4	30.3	28.0	34.53	11.0	47%
Outdoor Leadership	6.5	5.3	4.6	2.9	0.1	-6.4	-98%
Project						0.0	
Physical Education	11.3	15.9	20.4	16.2	16.5	5.2	46%
Philosophy	1.0	4.6	3.7	3.4		-1.0	
Physics	3.2	0.7	0.3	1.1		-3.2	
Intro to Nursing				0.1		0.0	
Political Science	4.5	3.4	4.5	4.2	3.2	-1.3	-28%
Psychology	14.4	15.6	16.2	13.1	13.5	-0.9	-6%
Real Estate		0.4				0.0	
Sociology	10.5	15.8	8.3	6.7	5.8	-4.7	-45%
Spanish	4.7	6.4	6.8	0.4		-4.7	
Speech	15.7	16.6	16.8	16.6	17.1	1.4	9%
Study Skills	5.0	5.5	4.4	4.5	3.5	-1.6	-31%
Theatre	2.0	2.0	1.7	2.3		-2.0	

Source: MnSCU ISRS Operational Data

Table 26
Fall Majors Count by CIP Code - 5 Year Comparison, by 2008 Count

CIP Description	CIP Code	Fall 2004	Fall 2005	Fall 2006	Fall 2007	Fall 2008	5 Yr Difference	5 Yr Difference %
Liberal Arts and Sciences	240101	286	277	278	245	150	-136	-48%
Undetermined/cip unknown		70	80	72	75	72	2	3%
Licensed Practical Nursing	511613	46	34	31	47	52	6	13%
Industrial Mechanics	470303				38	51	51	
Health and Physical Ed	310501			1		5	5	
American Indian/Native	050202					5	5	
Logistics and Materials	520203					3	3	
Physical Education	131314	4	6	6	9	2	-2	-50%
Accounting Technology	520302	2	2	4	3	1	-1	-50%
Nurse/Nursing Assistant	511614					1	1	
Administrative Assist	520401			4	8		0	
Parks, Recreation	310301	10	9	5	1		-10	
Business/Office	520407	4	4		1		-4	
Reg/Gen High School Dip	530101	1	1				-1	
Computer and Information	110101		1				0	
Computer/Information	111099		1				0	
Computer Science	110701	1					-1	
Total		424	415	401	427	342	-82	-19%

Source: Fall 30th Day Enrollment Tables/MnSCU ISRS Operational Data

Table 27
On-line Enrollment

	Fiscal Year				
	2005	2006	2007	2008	2009
Sections Offered	5	1	6	8	10
FYE	1.2	2.5	16.5	13.9	15.0
Duplicated Count	8	19	134	117	132

Source: MnSCU ISRS Operational Data

Table 28
Program Enrollments

	Fall 04		Fall 05		Fall 06		Fall 07		Fall 08	
	Count	Percent	Count	Percent	Count	Percent	Count	Percent	Count	Percent
Liberal Arts	286	68%	277	67%	278	69%	245	57%	150	44%
Technical	125	30%	136	33%	115	29%	176	41%	157	46%
Unknown	12	3%	2	0%	8	2%	6	1%	35	10%
Total	423		415		401		427		342	

Source: 30th Day Enrollment Tables/MnSCU ISRS Operational Data/CIP

Table 29
Degrees Awarded by Fiscal Year

	2004		2005		2006		2007		2008	
	Number	Percent	Number	Percent	Number	Percent	Number	Percent	Number	Percent
AA	48	46%	49	59%	61	53%	52	53%	47	48%
AAS										
AS					2	2%	1	1%		
Certificate	32	30%	24	29%	26	22%	31	31%	34	35%
Diploma	25	24%	10	12%	27	23%	15	15%	17	17%
Total Degrees	105		83		116		99		98	
Total Students	103		83		112		97		97	

Source: ITS Management Reports/Academic/Awards Granted

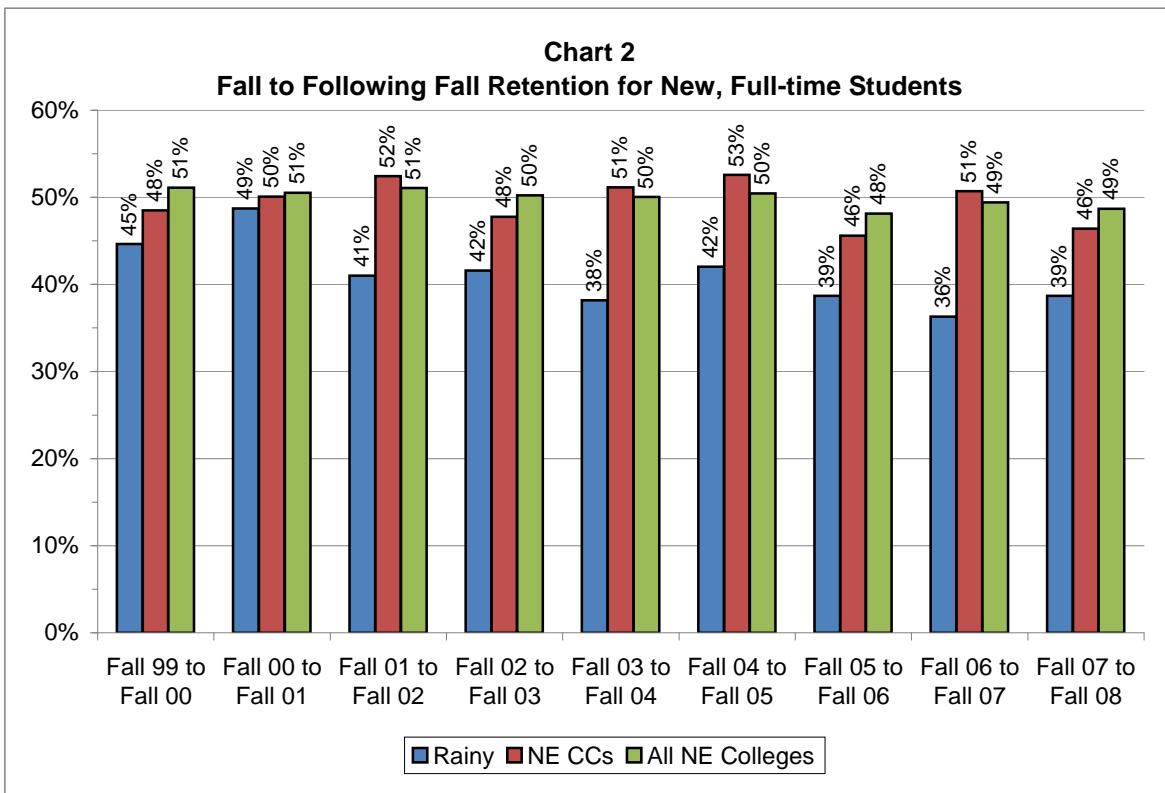
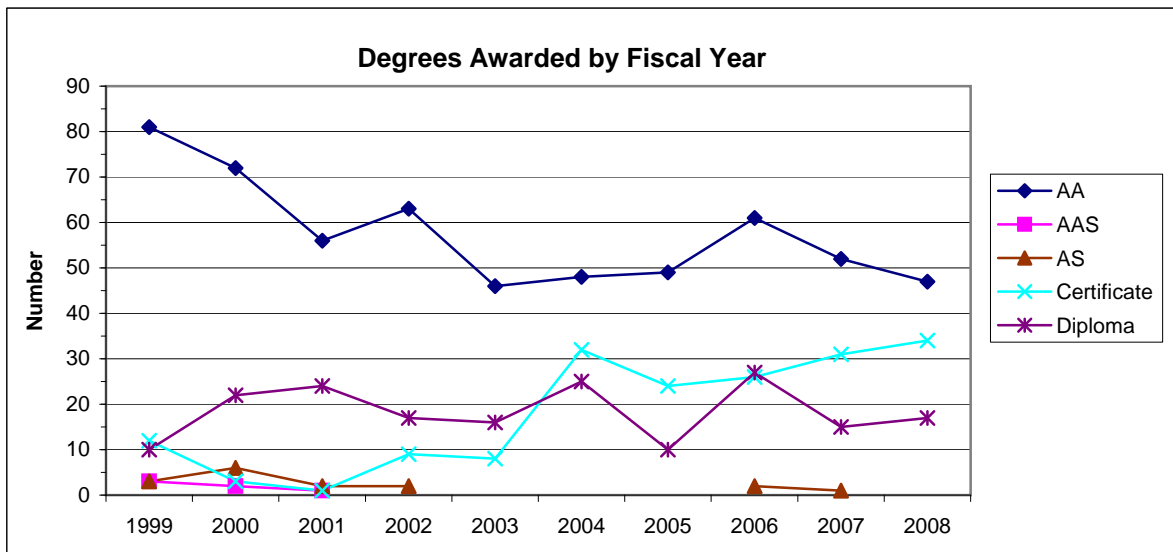


Table 30
Retention and Success Rates for Fall, Full-time Students
Fall 2004

	Fall 2004 Entering Cohort	First Spring Retention Rate	First Spring Success Rate	Second Fall Retention Rate	Second Fall Success Rate	Second Spring Retention Rate	Second Spring Success Rate	Third Fall Retention Rate	Third Fall Success Rate	Third Spring Retention Rate	Third Spring Success Rate
Gender											
Unknown	79	77%	86%	44%	78%	39%	75%	11%	76%	6%	73%
Female	109	69%	74%	40%	64%	27%	60%	5%	61%	5%	64%
Male											
Ethnicity											
American Indian or Alaska	1	100%	100%	100%	100%	100%	100%	0%	100%	0%	100%
Asian or Pacific Islander	1	100%	100%	0%	100%	0%	100%	0%	100%	0%	100%
Black or African American	65	65%	71%	31%	60%	17%	55%	6%	60%	5%	63%
Hispanic or Latino	2	100%	100%	50%	50%	100%	100%	0%	100%	50%	100%
White	113	74%	82%	48%	77%	39%	73%	9%	73%	5%	72%
Unknown	6	100%	100%	50%	50%	33%	33%	0%	33%	0%	33%
Agegroup											
15 to 17	30	90%	90%	73%	83%	70%	80%	10%	87%	7%	83%
18-20	118	72%	81%	42%	72%	29%	69%	8%	69%	5%	71%
21-24	22	59%	59%	14%	45%	9%	41%	0%	41%	5%	41%
25-29	7	71%	86%	29%	71%	14%	57%	0%	57%	0%	57%
30-39	6	33%	50%	17%	50%	0%	33%	0%	33%	0%	33%
40+	4	75%	100%	25%	75%	25%	75%	25%	75%	25%	75%
Unknown	1	100%	100%	100%	100%	100%	100%	0%	100%	0%	100%
Admission Status											
Undergrad Regular	129	70%	77%	39%	64%	30%	60%	9%	61%	6%	62%
Undergrad Transfer	34	71%	82%	29%	79%	9%	76%	0%	74%	0%	76%
High School	25	88%	88%	76%	88%	72%	84%	12%	92%	8%	88%
Other Undergrad											
Totals	188	72%	79%	42%	70%	32%	66%	7%	68%	5%	68%

Source: MnSCU Persistence and Completion Rate Table

Prepared by: The Office of Institutional Research

Table 31
**Retention and Success Rates for Fall, Full-time Students
 Fall 2005**

	Fall 2005 Entering Cohort	First Spring Retention Rate	First Spring Success Rate	Second Fall Retention Rate	Second Fall Success Rate	Second Spring Retention Rate	Second Spring Success Rate	Third Fall Retention Rate	Third Fall Success Rate	Third Spring Retention Rate	Third Spring Success Rate
Gender											
Female	69	81%	90%	48%	86%	46%	83%	9%	84%	6%	83%
Male	112	72%	76%	33%	59%	31%	64%	17%	69%	7%	65%
Unknown	3	100%	100%	33%	33%	33%	33%	33%	67%	33%	67%
Ethnicity											
American Indian or Alaska	4	75%	75%	25%	50%	0%	25%	25%	50%	0%	25%
Asian or Pacific Islander	2	100%	100%	100%	100%	100%	100%	50%	50%	50%	50%
Black or African American	74	70%	73%	26%	59%	23%	66%	16%	73%	3%	68%
Hispanic or Latino	2	50%	50%	100%	100%	50%	100%	0%	50%	0%	50%
White	90	80%	87%	47%	74%	48%	74%	12%	77%	10%	77%
Unknown	9	78%	100%	44%	89%	44%	89%	0%	89%	0%	89%
Agegroup											
15 to 17	20	85%	90%	60%	80%	60%	80%	10%	90%	10%	90%
18-20	123	77%	81%	41%	70%	37%	73%	16%	75%	7%	71%
21-24	21	67%	67%	14%	48%	14%	48%	10%	62%	5%	62%
25-29	7	100%	100%	43%	57%	43%	57%	14%	57%	14%	57%
30-39	10	40%	80%	20%	90%	40%	90%	0%	80%	0%	80%
Admission Status											
Undergrad Regular	96	76%	83%	39%	66%	36%	71%	14%	73%	5%	71%
Undergrad Transfer	41	73%	80%	22%	78%	27%	78%	7%	80%	5%	78%
High School	28	82%	82%	64%	71%	61%	71%	14%	71%	11%	71%
Other Undergrad	16	69%	69%	38%	63%	25%	56%	31%	75%	13%	63%
Totals	181	76%	81%	39%	69%	37%	71%	14%	75%	7%	72%

Source: MnSCU Persistence and Completion Rate Table

Prepared by: The Office of Institutional Research

Table 32
2004, 2005, 2006 and 2007 IPEDS 3-Year Graduation and Transfer-out Rates
Fall 2001, Fall 2002, Fall 2003 and Fall 2004 First-time, Full-time, Degree Seeking Students

COLLEGE	Cohort				Graduation Rate				Transfer Rate				Combined Grad/Trans Rate				
	Cohort	2001	2002	2003	2004	2001	2002	2003	2004	2001	2002	2003	2004	2001	2002	2003	2004
Rainy River Community College		121	102	118	129	26%	28%	25%	26%	34%	44%	32%	36%	60%	72%	58%	63%
Fond du Lac Tribal & CC		145	164	154	178	26%	19%	18%	17%	20%	18%	21%	25%	46%	37%	40%	42%
Hibbing Community College		432	422	561	476	36%	37%	36%	37%	24%	23%	27%	26%	60%	60%	63%	63%
Itasca Community College		334	341	293	327	37%	38%	33%	37%	21%	21%	27%	24%	58%	60%	59%	62%
Lake Superior College		524	515	514	578	21%	21%	20%	19%	22%	19%	20%	25%	44%	40%	40%	44%
Mesabi Range CTC		422	349	404	343	50%	42%	31%	39%	15%	32%	11%	20%	65%	74%	42%	59%
Vermilion Community College		254	243	227	200	28%	24%	29%	34%	39%	48%	32%	33%	67%	72%	61%	66%
Total Northeastern Colleges		2,232	2,136	2,271	2,231	33%	31%	32%	30%	23%	27%	24%	26%	57%	58%	56%	56%
Metro CC's		3,496	3,816	4,340	4,362	12%	14%	14%	14%	38%	38%	39%	39%	50%	51%	53%	53%
Metro CTC's		2,251	2,396	2,443	3,049	17%	14%	15%	22%	26%	26%	26%	24%	43%	39%	42%	46%
Metro TC's		2,132	2,117	2,534	1,905	41%	41%	44%	38%	13%	14%	13%	14%	54%	55%	57%	53%
Greater MN CC's		854	850	792	834	31%	29%	28%	31%	28%	31%	28%	28%	59%	61%	56%	59%
Greater MN CTC's		6,832	6,851	7,727	7,276	40%	38%	37%	36%	19%	19%	17%	20%	58%	57%	54%	56%
Greater MN TC's		2,693	2,721	3,066	2,804	49%	50%	49%	45%	12%	12%	13%	17%	61%	62%	62%	61%
Total Colleges		18,258	18,751	20,902	20,230	33%	32%	32%	30%	22%	23%	22%	24%	55%	54%	54%	55%



Source: Office of the Chancellor Research and Planning, November 2008

**Table 33
Status of Graduates Summary
Rainy River Community College**

	Total Graduates	Related Work Full-time	Related Work Part-time	Related Employment Rate	Continuing Education Count	Continuing Education %	Unrelated Work Seeking Related	Available for Work but Unemployed	Unrelated Work Not Seeking Related	Unavailable for Work	Status Unknown	Total Related Work	Total Available for Related Work
1998	110	13	3	80%	52	47%	0	4	7	1	30	16	20
1999	109	11	6	81%	64	59%	2	2	5	2	17	17	21
2000	105	10	2	75%	60	57%	2	2	5	8	16	12	16
2001	82	6	5	79%	46	56%	1	2	5	2	15	11	14
2002	91	8	4	80%	58	64%	3	0	6	2	10	12	15
2003	70	11	3	78%	34	49%	2	2	4	2	12	14	18
2004	105	7	8	75%	62	59%	3	2	6	2	15	15	20
2005	83	3	4	78%	66	80%	2	0	1	0	7	7	9
2006	116	14	5	76%	68	59%	2	4	3	5	15	19	25
2007	98	6	1	58%	66	67%	3	2	6	1	13	7	12

Source: MnSCU Graduate Follow-up Survey Results

NOTES:

- 1) Caution about the use of data for a program is advisable when the number of graduates is low or the number of "Status Unknown" exceeds 15% of the total graduates.
- 2) Graduates or individuals who know the graduates provided this information, including relatedness of employment to program of study.
- 3) "Related Employment Part-time" includes graduates who reported related employment but did not indicate the number of hours worked per week.
- 4) "Unavailability for Employment" includes graduates who chose not to seek work, were unable to work, or were international students who returned to their homelands.
- 5) "Status Unknown" includes graduates who could not be located or did not respond to requests for information.
- 6) Categories of employment can include some graduates who also reported continuing education but indicated that employment was their preferred classification.
- 7) "Continuing Education" can include some graduates who also reported employment but indicated that continuing education was their preferred classification.
- 8) Information on graduates who both worked and pursued further education is available in supplemental materials.
- 9) Sums of percentages might not equal total percentages due to rounding.
- 10) N/A ("Not Applicable") is displayed in the "Percent of Available" row when there are no graduates available.

Report generated: March 2009

Table 34
Continuing Education & Customized Training Enrollment

	Number of Classes	Total Students in Classes	Number of Hours	Unduplicated Headcount
FY 2004	48	1,035	5,107	956
FY 2005	24	369	2,157	362
FY 2006	85	1,112	6,372	466
FY 2007	70	798	3,634	672
FY 2008	113	843	6,949	667

Source: MnSCU ISRS Operational Data

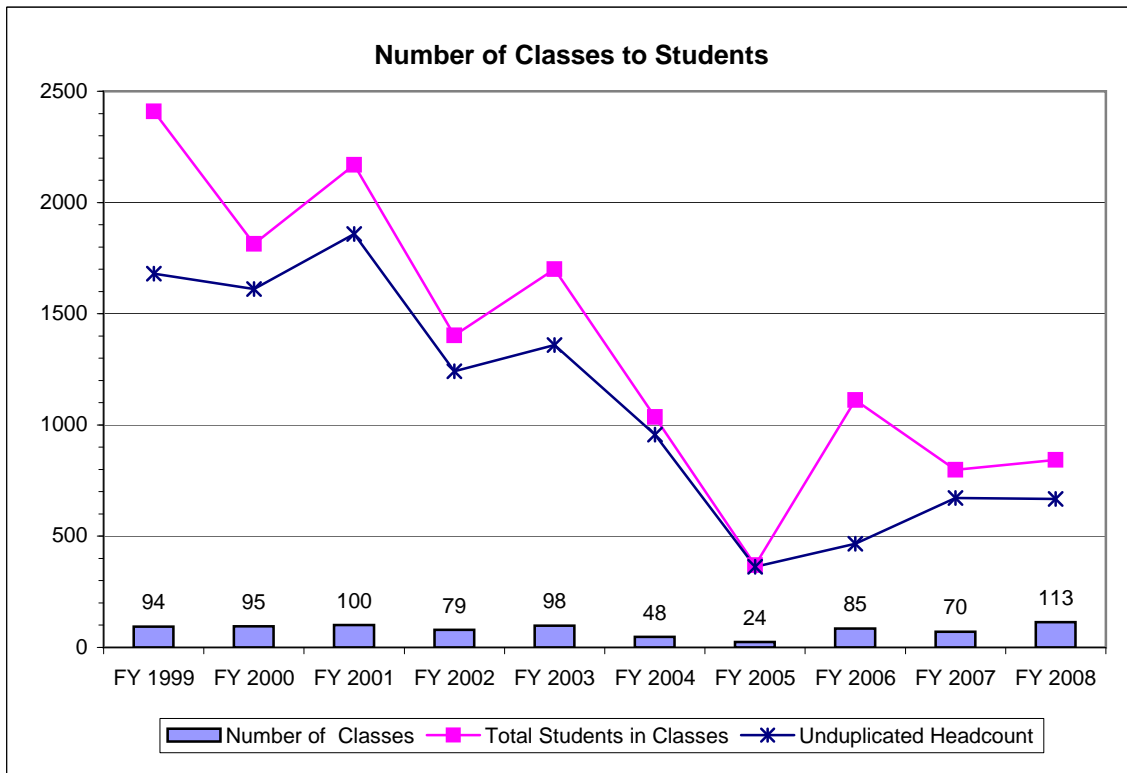
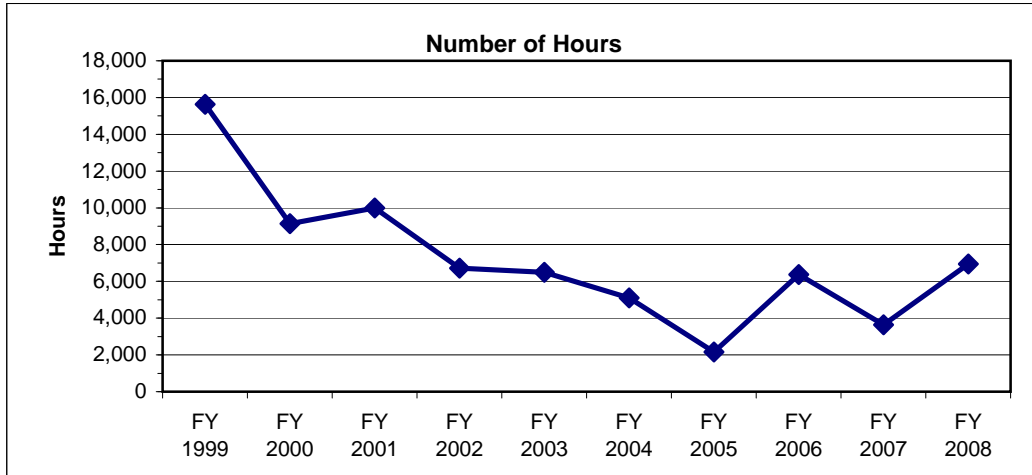
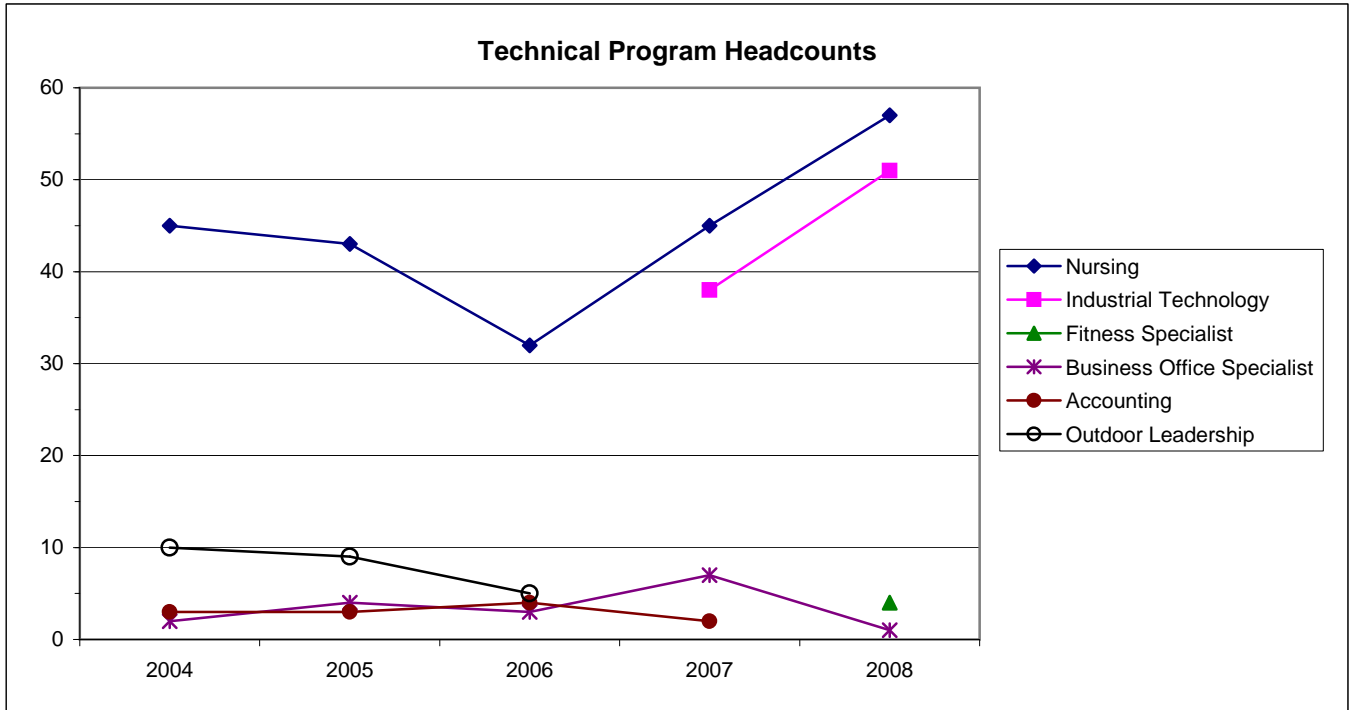


Table 35
Technical Program Fall Headcount

	2004	2005	2006	2007	2008
Nursing	45	43	32	45	57
Industrial Technology				38	51
Fitness Specialist					4
Business Office Specialist	2	4	3	7	1
Accounting	3	3	4	2	
Outdoor Leadership	10	9	5		

Source: Rainy River's Registrar's Office



Faculty and Staff

Table 36
Gender Distribution

	Count	Percent
Female	26	54%
Male	22	46%
Total	48	

Table 37
Age Distribution

	Count	Percent
Less than 34	4	8%
35-44	12	25%
45-54	16	33%
55 +	16	33%
Total	48	

Table 38
Years of Service

	Count	Percent
Less than 1	4	8%
1-4	14	29%
5-9	6	13%
10-14	7	15%
15-19	8	17%
20+	9	19%
Total	48	

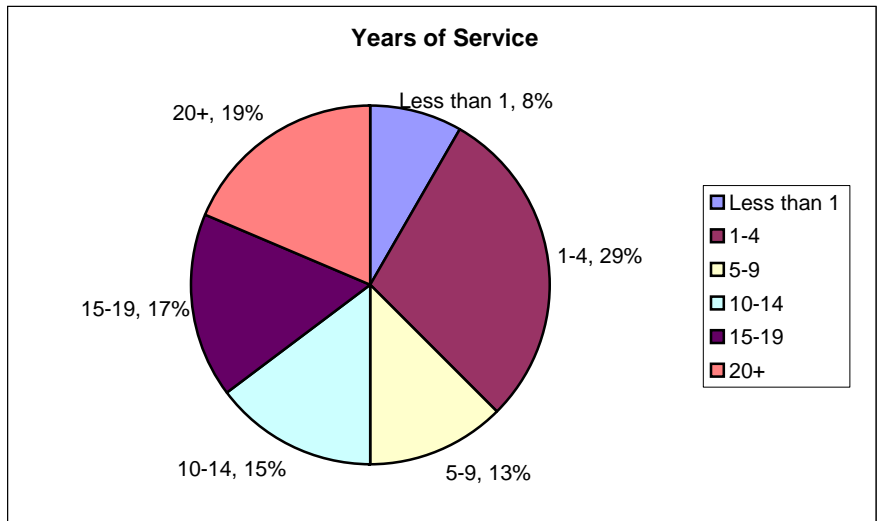
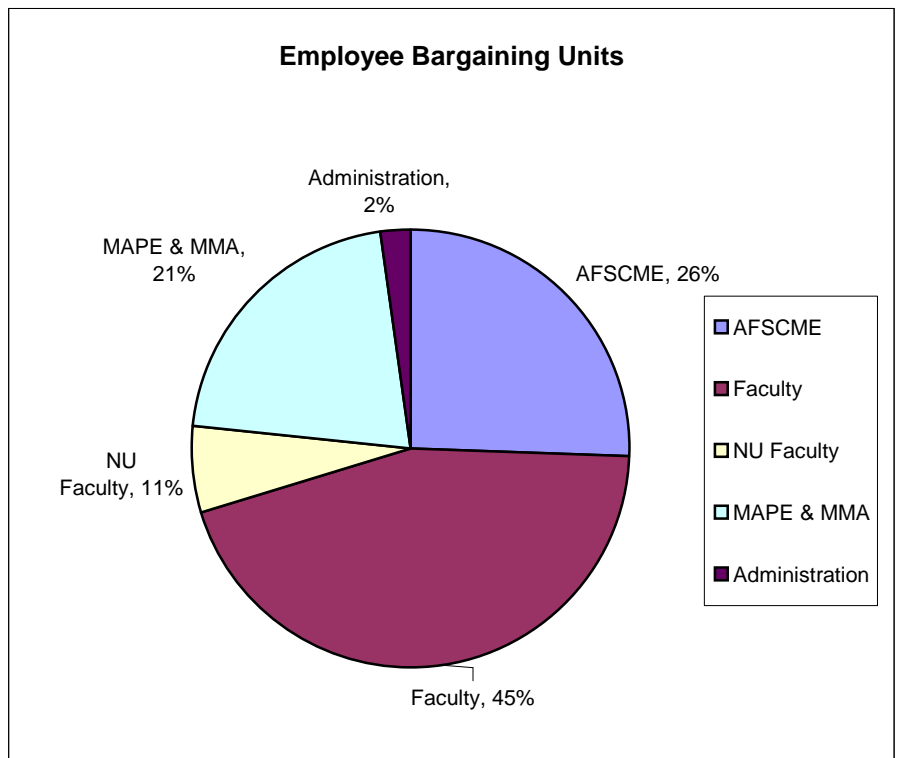


Table 39
Full-time/Part-time Status

AFSCME	Count	Percent
Full-time	9	75%
Part-time	3	25%
Faculty		
Full-time	11	52%
Part-time	10	48%
Non-Unit Faculty		
Full-time		
Part-time	3	100%
MAPE and MMA		
Full-time	8	80%
Part-time	2	20%
Non-Unit Staff		
Full-time		
Part-time		
Administration		
Full-time	1	100%
Part-time		
Total*	47	



*Employees may be in more than one unit.

Source: MnSCU Office of the Chancellor, Personnel-Data Management HRIS, December 5, 2008

Table 40
Rainy River Community College
STATEMENT OF NET ASSETS (Unaudited)
FOR THE YEAR ENDED JUNE 30, 2008
(IN THOUSANDS)

Assets	
Current Assets	
Cash and cash equivalents	\$ 708
Investments	-
Grants receivable	83
Accounts receivable, net	152
Prepaid expense	26
Inventory	22
Student loans and other assets, net	6
Securities lending collateral	4
Total current assets	<u>1,001</u>
Restricted Assets	
Noncurrent Assets	
Advances from other schools	15
Student loans and other assets, net	
Capital assets, net	2,472
Total noncurrent assets	<u>2,487</u>
Total Assets	<u>3,488</u>
Liabilities	
Current Liabilities	
Salaries payable	313
Accounts payable	145
Unearned revenue	129
Payable from restricted assets	-
Interest payable	-
Funds held for others	46
Current portion of long-term debt	25
Other compensation benefits	82
Other liabilities	-
Securities lending collateral	4
Total current liabilities	<u>744</u>
Noncurrent Liabilities	
Advances to other schools	100
Noncurrent portion of long-term debt	66
Other compensation benefits	264
Capital contributions payable	47
Total noncurrent liabilities	<u>477</u>
Total Liabilities	<u>1,221</u>
Net Assets	
Invested in capital assets, net of related debt	2,381
Restricted expendable, bond covenants	-
Restricted expendable, other	41
Unrestricted	(155)
Total Net Assets	<u>\$ 2,267</u>

Table 41
Rainy River Community College
Statements of Revenues, Expenses and Changes in Net Assets (Unaudited)
For the Year Ended June 30, 2008
(IN THOUSANDS)

<u>Operating Revenues</u>	
Tuition, auxiliary and sales, net	\$ 1,073
Restricted student payments, net	-
Federal grants	724
State grants	187
Other income	87
Total Operating Revenues	<u>2071</u>
<u>Operating Expenses</u>	
Salaries	3677
Purchased services	515
Supplies	141
Repairs and maintenance	133
Depreciation	153
Financial aid, net	67
Other expense	238
Total operating expenses	<u>4924</u>
Operating income (loss)	<u>(2853)</u>
<u>Non-operating Revenues (Expenses)</u>	
Appropriations	2479
Private grants	23
Interest income	2
Interest expense	(11)
Grants to other organizations	(11)
Total Nonoperating Revenue (expenses)	<u>2482</u>
<u>Income (Loss) Before Other Revenues, Expenses, Gains, or Losses</u>	<u>(371)</u>
Capital appropriations	35
Capital Grants	-
Donated assets and supplies	3
Transfers in	42
Transfers out	(71)
Gain (loss) on disposal of capital assets	32
Change in Net Assets	<u>(330)</u>
Total Net Assets - Beginning of Year	<u>2597</u>
Total Net Assets - End of Year	<u>\$ 2,267</u>

Source: MnSCU's Annual Financial Report for Year Ending 6/30/08
Subtotals and totals may not agree due to rounding.

Regional Population and Employment

Table 42
Population Estimates for Region 3 Counties and State 2000-2007

	2000	2001	2002	2003	2004	2005	2006	2007	Change: 2000 to 2007	
									Number	Percent
Aitkin	15,301	15,434	15,495	15,810	16,085	16,216	16,198	16,067	766	5%
Carlton	31,671	32,146	32,547	33,154	33,748	34,096	34,220	33,990	2,319	7%
Cook	5,168	5,175	5,223	5,280	5,316	5,368	5,369	5,356	188	4%
Itasca	43,992	44,036	44,191	44,198	44,242	44,285	44,347	44,278	286	1%
Koochiching	14,355	14,160	13,990	13,986	13,832	13,773	13,619	13,506	(849)	-6%
Lake	11,058	11,083	11,088	11,160	11,229	11,189	11,100	11,119	61	1%
St Louis	200,528	199,999	199,805	198,721	198,262	198,102	196,324	196,108	(4,420)	-2%
Region 3	317,810	322,033	322,339	322,309	322,714	323,029	321,177	320,424	2,614	1%
Minnesota	4,919,479	4,977,976	5,033,661	5,088,006	5,145,106	5,205,091	5,231,106	5,263,610	344,131	7%

Source: Minnesota State Demographers Office

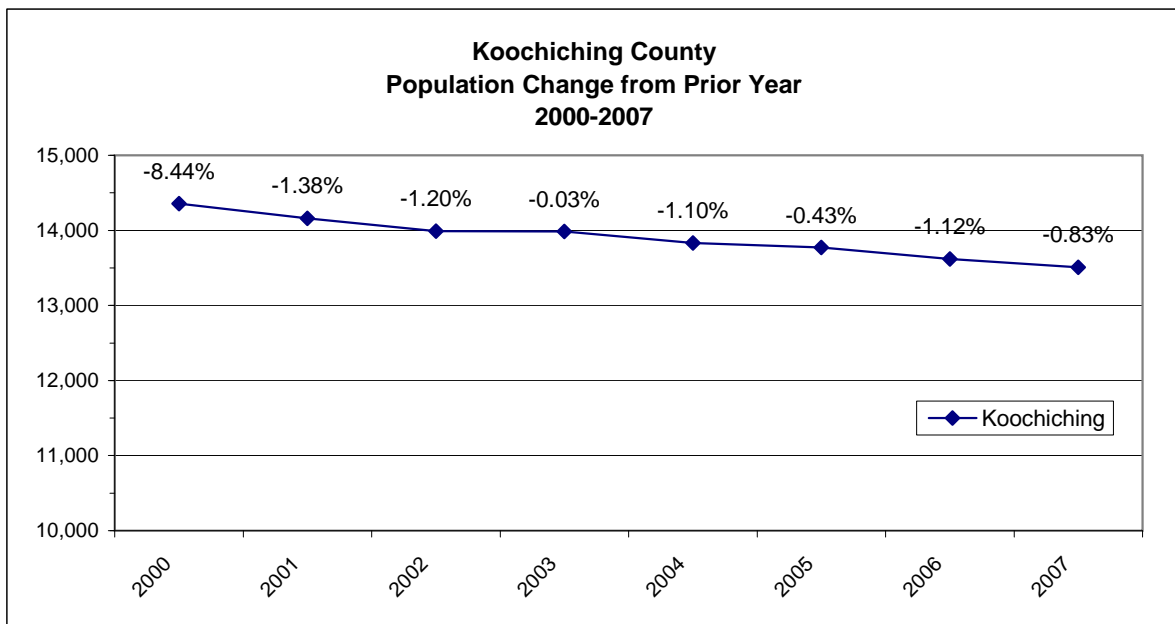


Table 43
Projected 30 Year Population Change for County, Region, and State

	2005	2010	2015	2020	2025	2030	2035	2005 - 2015 % Change	2005 - 2035 % Change
Aitkin	16,318	17,020	17,970	18,720	19,000	19,330	19,620	10.1%	20.2%
Carlton	34,393	36,970	39,640	41,950	43,850	45,300	46,600	15.3%	35.5%
Cook	5,420	5,570	5,790	6,040	6,290	6,300	6,290	6.8%	16.1%
Itasca	44,818	45,620	46,670	47,600	48,290	48,480	48,580	4.1%	8.4%
Koochiching	14,045	13,670	13,490	13,400	13,340	13,150	13,000	-4.0%	-7.4%
Lake	11,263	11,460	11,750	11,990	12,180	12,240	12,330	4.3%	9.5%
St Louis	199,103	198,010	199,120	200,500	201,830	202,050	202,260	0.0%	1.6%
Region 3	325,356	328,320	334,430	340,200	344,780	346,850	348,680	2.8%	7.2%
Minnesota	5,192,122	5,446,490	5,709,700	5,943,230	6,135,060	6,297,960	6,446,260	10.0%	24.2%

Source: Minnesota Department of Administration. Office of Geographic and Demographic Analysis. Office of the State Demographer
 Based on 2000 Census, Jan. 1, 2008

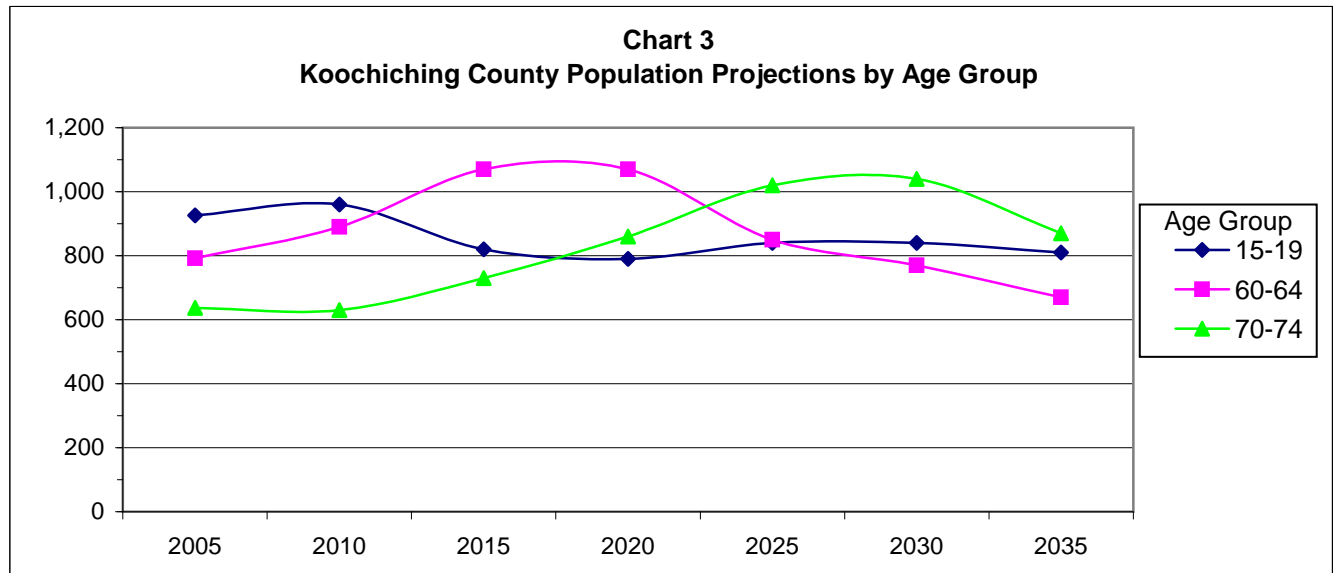
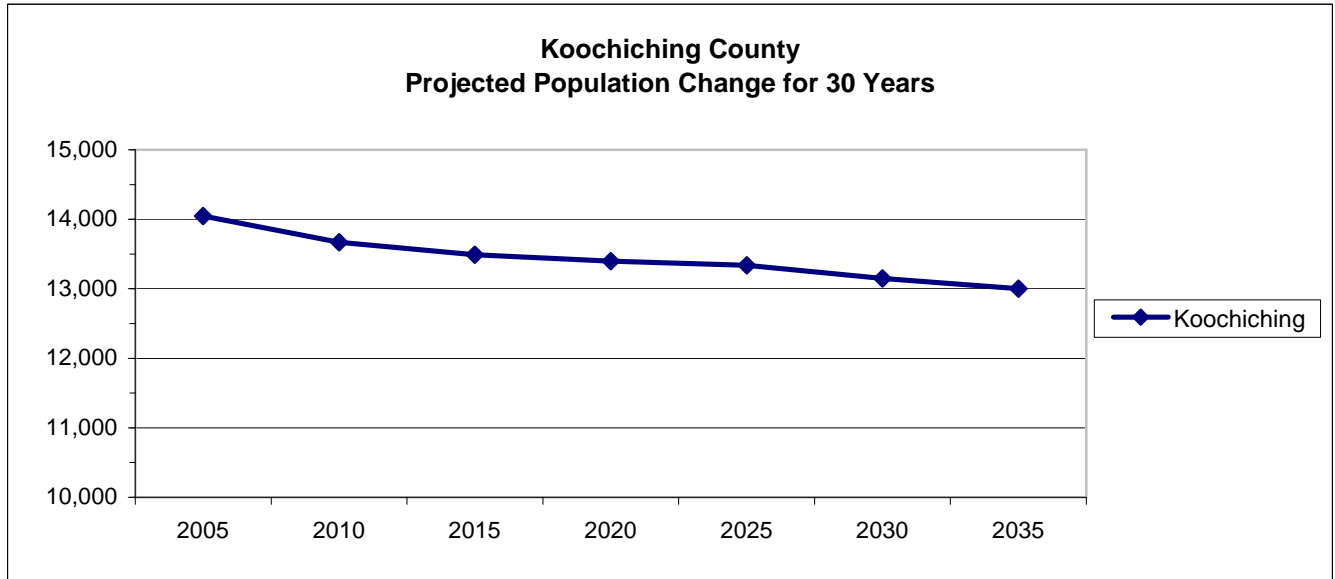


Table 44
High School Enrollment for Area School Districts

	03-04	04-05	05-06	06-07	07-08
Ninth	190	184	196	182	201
Tenth	188	181	166	198	178
Eleventh	199	183	184	150	185
Twelfth	192	190	155	168	148
Total	769	738	701	698	712

Source: Minnesota Department Education, Enrollment 2007-2008

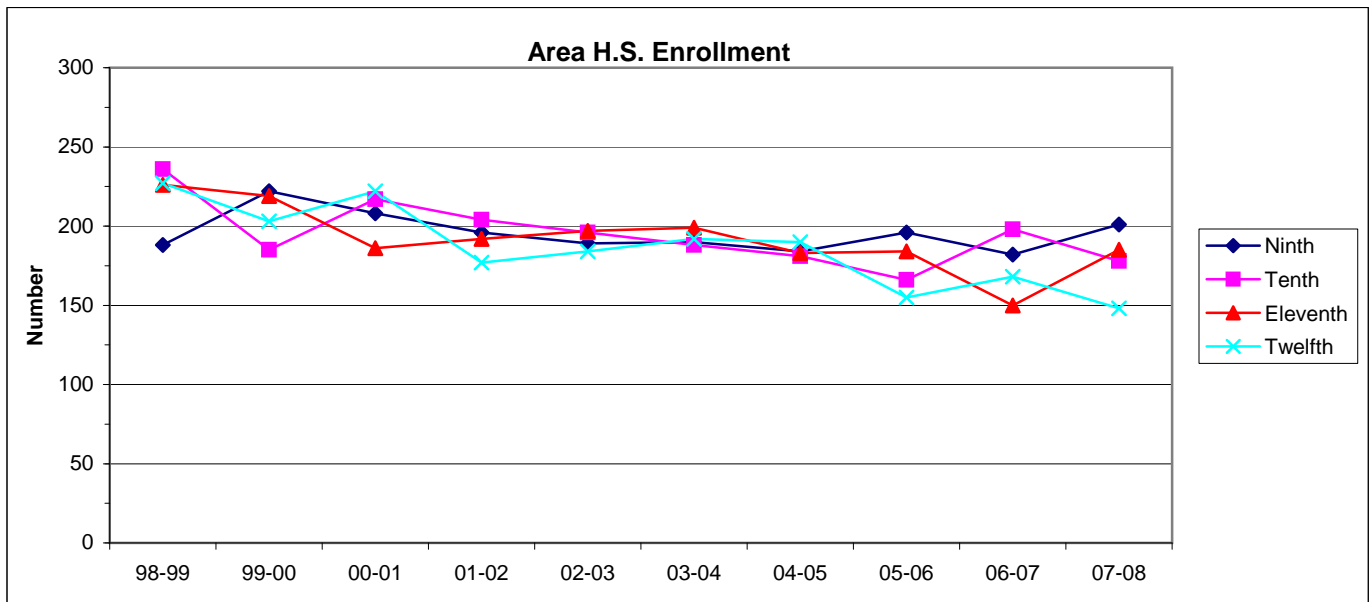


Table 45
2007-08 Enrollment for Area School Districts
K through 12

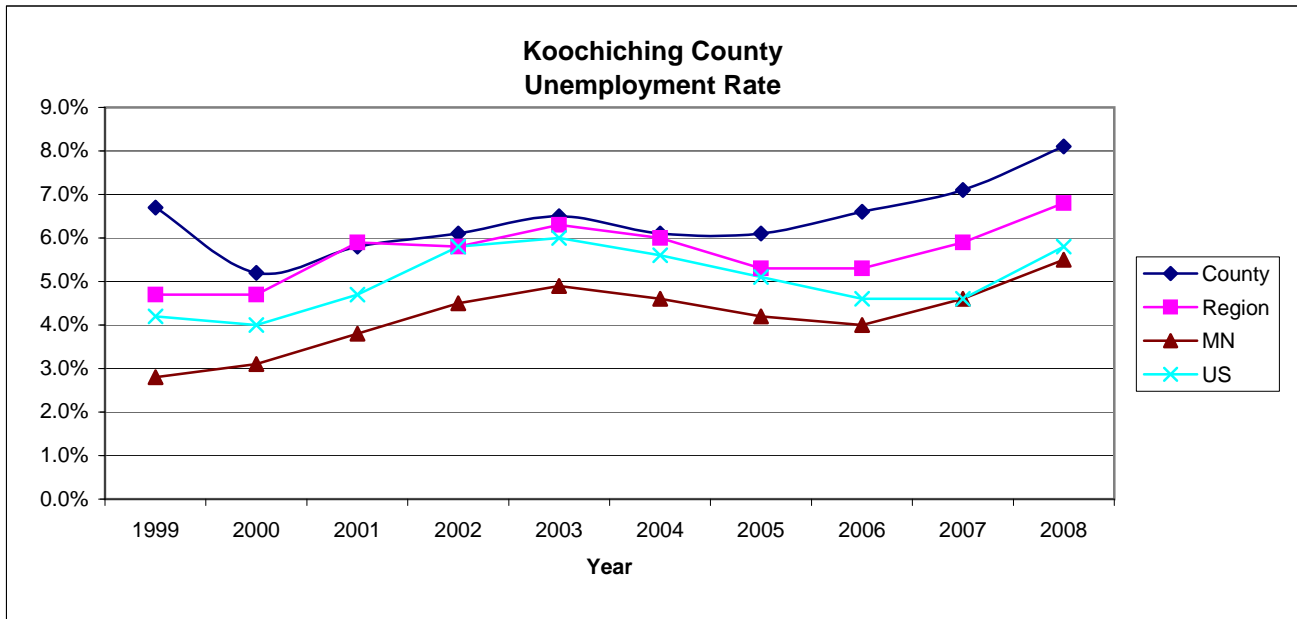
	Int'l Falls #0361	Littlefork Big Falls #0362	South Koochiching #0363	Total
Kinder	87	25	30	142
1	92	21	28	141
2	93	26	19	138
3	85	38	29	152
4	89	21	24	134
5	88	24	28	140
6	94	29	18	141
7	102	21	32	155
8	108	24	28	160
9	132	36	33	201
10	116	30	32	178
11	107	35	43	185
12	102	20	26	148
Total	1295	350	370	2015

Source: Minnesota Department Education, Enrollment 2007-2008

Table 46
Koochiching County Average Unemployment Rate

Year	County	Region	MN	US
1999	6.7%	4.7%	2.8%	4.2%
2000	5.2%	4.7%	3.1%	4.0%
2001	5.8%	5.9%	3.8%	4.7%
2002	6.1%	5.8%	4.5%	5.8%
2003	6.5%	6.3%	4.9%	6.0%
2004	6.1%	6.0%	4.6%	5.6%
2005	6.1%	5.3%	4.2%	5.1%
2006	6.6%	5.3%	4.0%	4.6%
2007	7.1%	5.9%	4.6%	4.6%
2008	8.1%	6.8%	5.5%	5.8%

Source: Minnesota Department of Economic Security



Summary of the Results from the Rainy River Community College Fall 2008 New Student Survey

A New Student Survey is conducted at the beginning of each fall term. This survey is intended to obtain student opinions about the information and services they received upon entering college. It also asked students to give themselves grades in various academic areas and sought to determine what educational goals were important for students as they enter college.

Ninety-five new students responded to the survey. Of the respondents:

- Sixty-three percent predicted their college GPA to be 2.5 to 3.4;
- Seventy-three percent intended to complete a degree from Rainy River Community College;
- Twenty-nine percent of the respondents said a Bachelor's degree was the highest degree they intended to obtain;
- Thirty-three percent of the new student survey respondents plan to work 1 to 15 hours a week while attending college; and
- Forty-five percent intend to study six to ten hours a week;

Table 1 shows the mean scores for the quality of information received and Table 2 shows the scores for the quality of enrollment activities. These areas were rated on a scale of: 4=Excellent, 3=Good, 2=Fair and 1=Poor.

Survey respondents graded themselves in several skill areas on a scale of 4 = A, 3 = B, 2 = C, 1 = D and 0 = F. These results are shown in Table 3.

**Table 1
Quality of Information Ranked by Mean**

	2008 Mean
Counselors	3.07
Enrollment/Admissions Staff	2.99
Coaching Staff	2.94
Class Schedule	2.91
Information or Reception	2.90
Financial Aid Office	2.87
Campus Visits	2.81
Web Site	2.79
Customer Service	2.74
Brochures	2.71
Other	2.69

**Table 2
Quality of Activity Ranked by Mean**

	2008 Mean
Other	3.25
Admissions Process	2.89
Registration Process	2.89
Times of Classes	2.81
Choice of Classes	2.73
Orientation Process	2.52
Placement Testing	2.51

A full report of the Fall 2008 New Student Survey results or questions, can be addressed to The Office of Institutional Research by contacting Doug Olney at (218-322-2408) or Tracey Roy (218-322-2409).

**Table 3
Self-Grades Ranked by Mean**

	2008 Mean
Motivation to do well in college	3.35
Academic Self-confidence	3.19
Reading Skills	3.09
Interpersonal and Social Skills	3.04
Writing Skills	3.01
Note-taking Ability	2.95
Class Participation	2.92
Computer Skills	2.89
Math Skills	2.81
Time Management Skills	2.80
Willingness to ask questions	2.75
Quality of study time	2.73
Amount of study time	2.60
Technical Skills	2.56
Science Skills	2.54
Mechanical Skills	2.29

New Students were asked to rank the level of importance to nine educational goals on a scale of 4 = High, 3=Average, 2=Low, and 1=No Importance (Table 4).

**Table 4
Educational Goals Ranked by Mean**

	2008 Mean
Prepare for a career or good job	3.80
Acquire knowledge for further education	3.53
Explore potential career options	3.46
Acquire knowledge for personal development	3.44
Think critically	3.36
Improve my self-confidence	3.35
Speak effectively	3.33
To write effectively	3.29
Acquire a technical skill	3.20

**A Summary of the
Results from the Rainy River Community College 2007-08 Graduate Survey**

Each year, all students graduating from Rainy River are asked to complete a student satisfaction survey. This survey is intended to see how graduates rate their satisfaction in both instructional and non-instructional areas with the college and how it could be improved. It also asked students to give themselves grades in various academic areas and indicate how much progress they made toward reaching educational goals.

In 2007-08, there were 53 graduate survey respondents. Of the respondents:

- Ninety-four percent said they intended to get a degree when they first enrolled;
- Sixty-eight percent received financial aid;
- Seventy-five percent indicated they intend to transfer, 23% before and 52% after a degree;
- Sixty percent of the graduate respondents received an AA/AS degree;
- Eighty-one percent said they plan to transfer during the next year;
- Thirty-three percent of the respondents said they will transfer to Bemidji State University, 17% to Hibbing Community College and 10% to the University of Minnesota - Duluth; and
- Seventy-nine percent said they would attend Rainy River Community College again.

The survey asked students to rate their level of satisfaction with instructional and non-instructional services on a scale of very dissatisfied, dissatisfied, neutral, satisfied and very satisfied. Tables 1 and 2 show the percentage of respondents who indicated that they were satisfied or very satisfied with the services they encountered or received.

**Table 1
Satisfied or Very Satisfied Responses in
Instructional Services
In Descending Order**

Service Areas	2008
Class Size	88.7%
Attitudes Of Professors	86.5%
Location	84.4%
Administration	71.2%
The College In General	70.6%
Instruction: Major Field	68.0%
Testing And Grading	67.9%
Course Content: Major Field	66.0%
Career Preparation	61.6%
Tuition	59.6%
Building/Grounds Conditions	55.8%
Classroom Facilities	53.9%
Course Content: Other Fields	52.8%
Instruction: Other Fields	52.8%
Course Availability	51.9%
Lab Facilities	51.0%
Course Variety	45.3%

**Table 2
Satisfied or Very Satisfied Responses in
Non-Instructional Services
In Descending Order**

Service Areas	2008
Learning Center	72.6%
Library	68.6%
Parking Facilities	65.4%
Bookstore	65.4%
Records Office	63.3%
Academic Advising	61.2%
Registration	60.8%
Orientation	60.0%
Career Guidance	55.1%
Computer Labs	55.1%
Student Center	54.2%
Financial Aid Office	54.1%
Student Employment	51.2%
Personal Counseling	45.9%
Student Activities	44.5%
Peer Tutors	42.2%
Varsity Sports	40.0%
Disabilities Services	38.7%
Job Placement	34.9%
Health Information	34.1%
Veterans' Services	32.5%
Intramural Sports	27.9%
Food Services	25.0%
Child Care Center	9.3%

Table 3 shows how students rated themselves in several skill areas on a scale of 4 = A, 3 = B, 2 = C, 1 = D, and 0 = F.

The Graduate Survey also asked students to indicate how much progress they had made toward educational goals. Table 4 illustrates the respondents progress on a scale of 4 = substantial progress, 3 = some progress, 2 = little progress, and 1 = no progress.

**Table 3
Self-Grades Ranked by Mean**

Skill Areas	2008 Mean
Reading Skills	3.20
Writing Skills	3.18
Computer Skills	3.12
Note-taking Ability	3.10
Academic Self-confidence	3.04
Motivation to do well in college	3.02
Class Participation	3.00
Willingness to ask questions	2.96
Interpersonal and Social Skills	2.94
Time management skills	2.92
Technical Skills	2.92
Math Skills	2.74
Quality of study time	2.72
Amount of study time	2.70
Science Skills	2.68
Mechanical Skills	2.57

**Table 4
Educational Goals Ranked by Mean**

Goal Areas	2008 Mean
Acquire knowledge for personal development	3.27
Acquire knowledge for further education	3.20
Improve my self-confidence	3.17
To write effectively	3.16
Think critically	3.16
Speak effectively	3.14
Prepare for a career or good job	3.10
Explore potential career options	3.04
Acquire a technical skill	2.81

Written Comments

The written comments were overall positive. Below are a few representative comments for each question. The full list of comments is available as a separate document.

If you had it to do over again, would you attend this college? Why?

- “Yes, it was a great experience and I would definitely do it again.”
- “Yes, it was nice having small class sizes and cheaper tuition.”
- “Yes, it was a great college. Good cost and location, great employees.”

What did you like most about the college?

- “Cost, location, teachers.”
- “Small class size, easy to get in touch with instructors.”
- “How small the class sizes were and how helpful the staff is”
- “Staff, class size.”
- The learning center.

What do you think needs to be changed or improved at the college?

- “More courses offered.”
- “The heating in the nursing classroom!”
- “More activities not sport related.”
- “More classes in classroom instead of online.”

A full report or questions can be addressed to The Office of Institutional Research by contacting Doug Olney (218-322-2408) or Tracey Roy (218-322-2409).